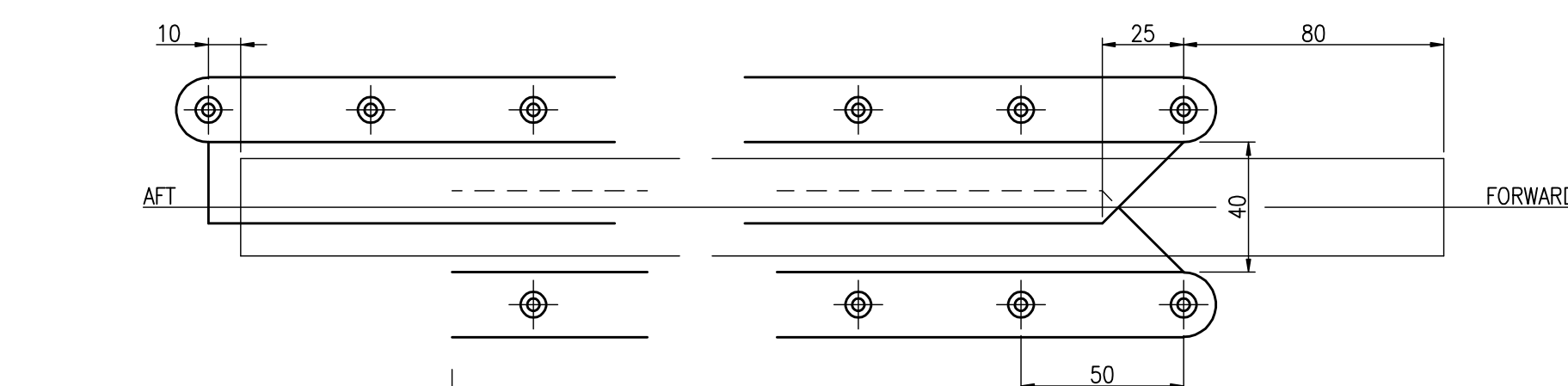
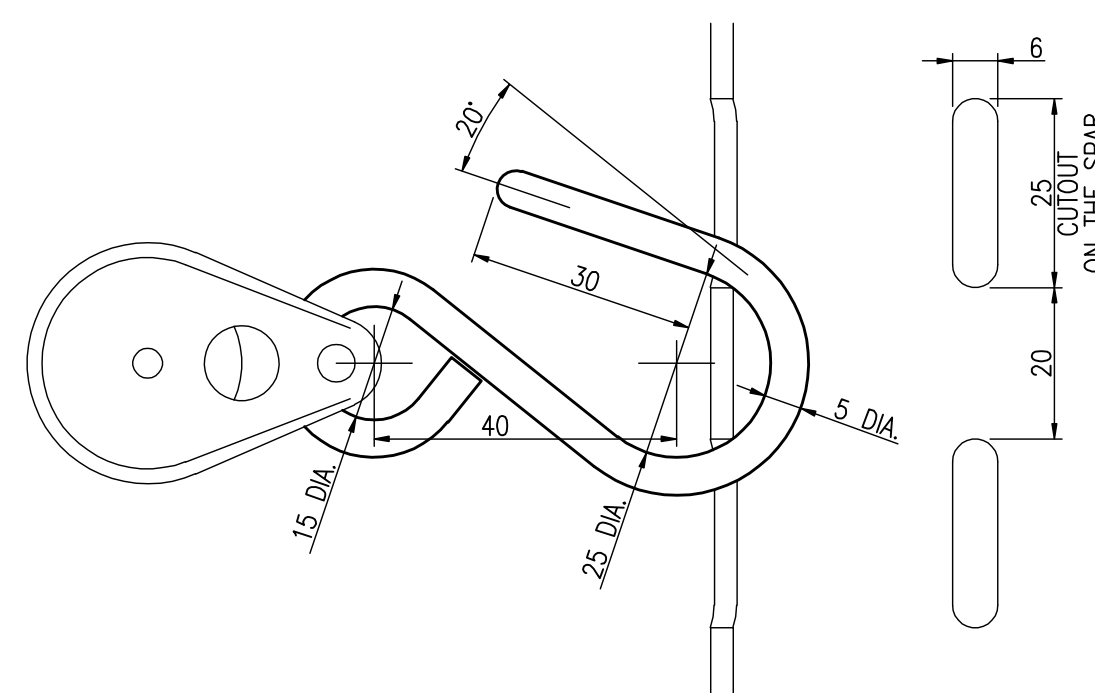
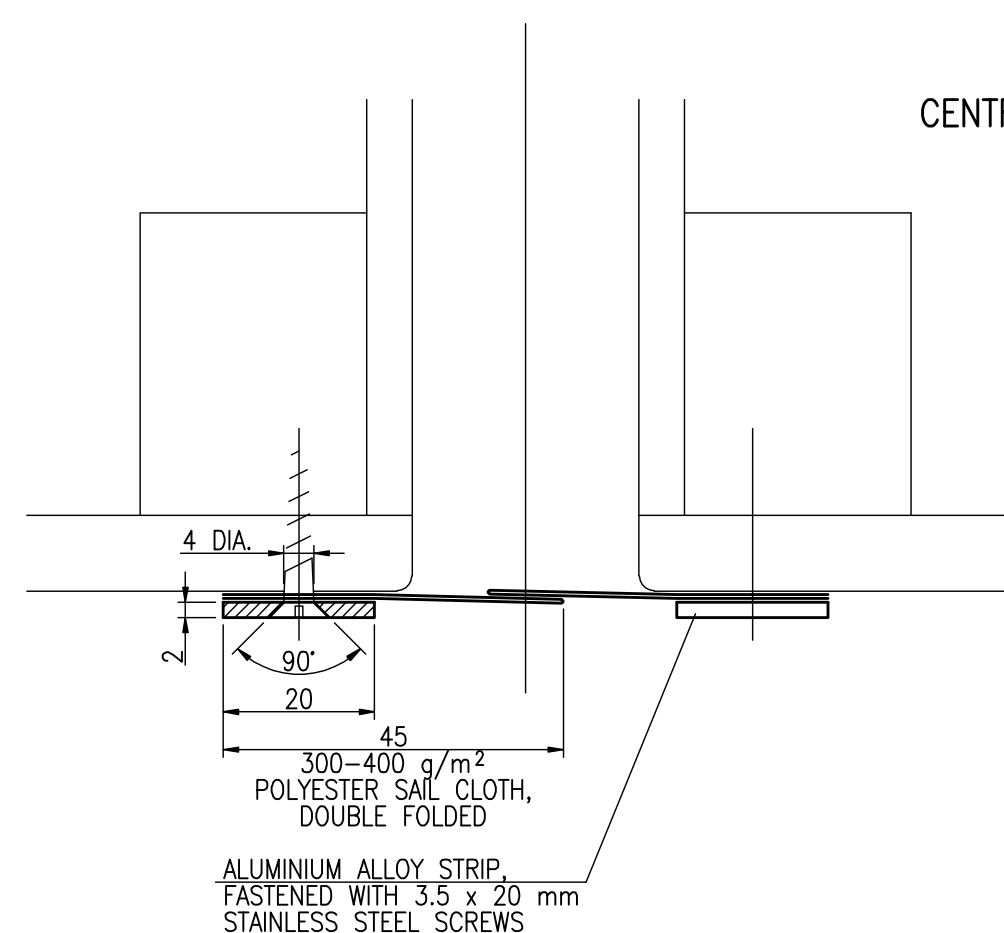


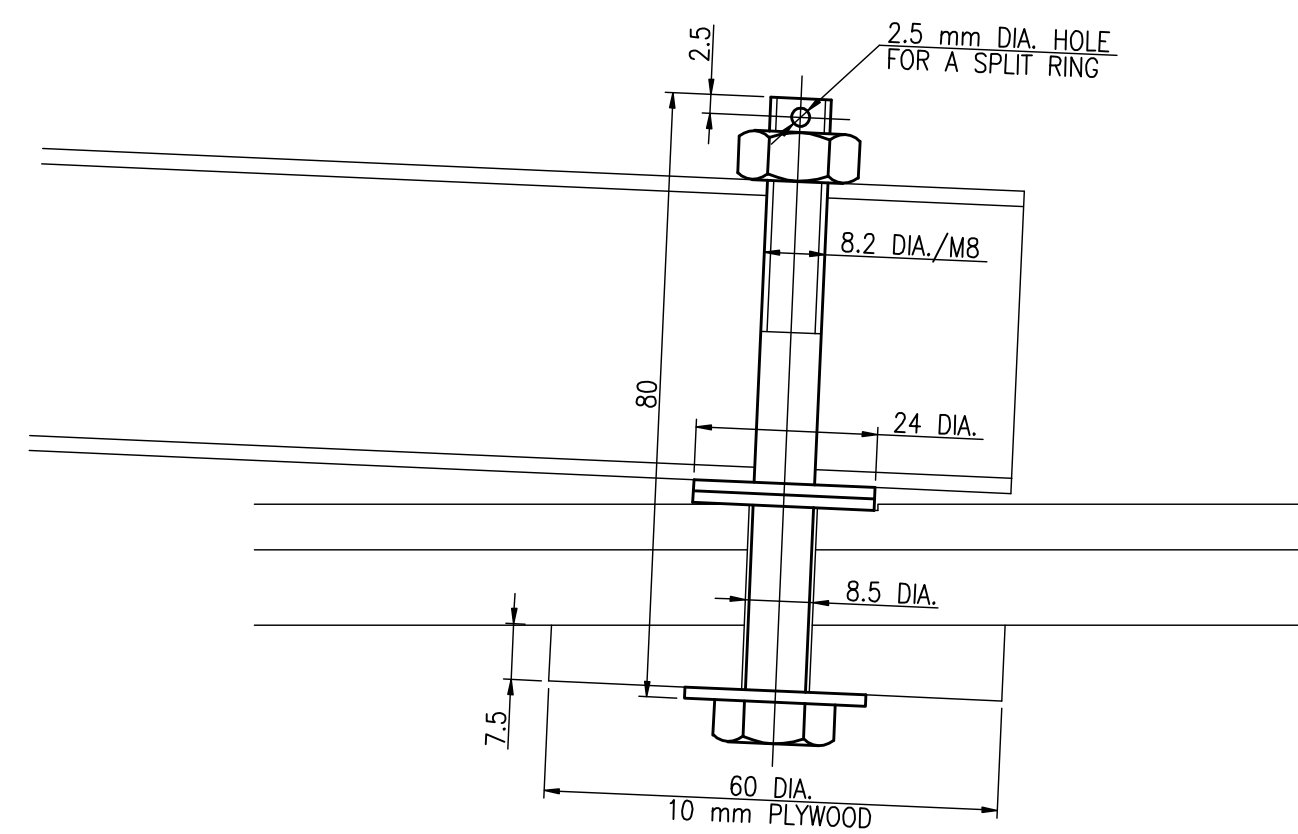
MAST CLEATS FASTENING
STAINLESS STEEL



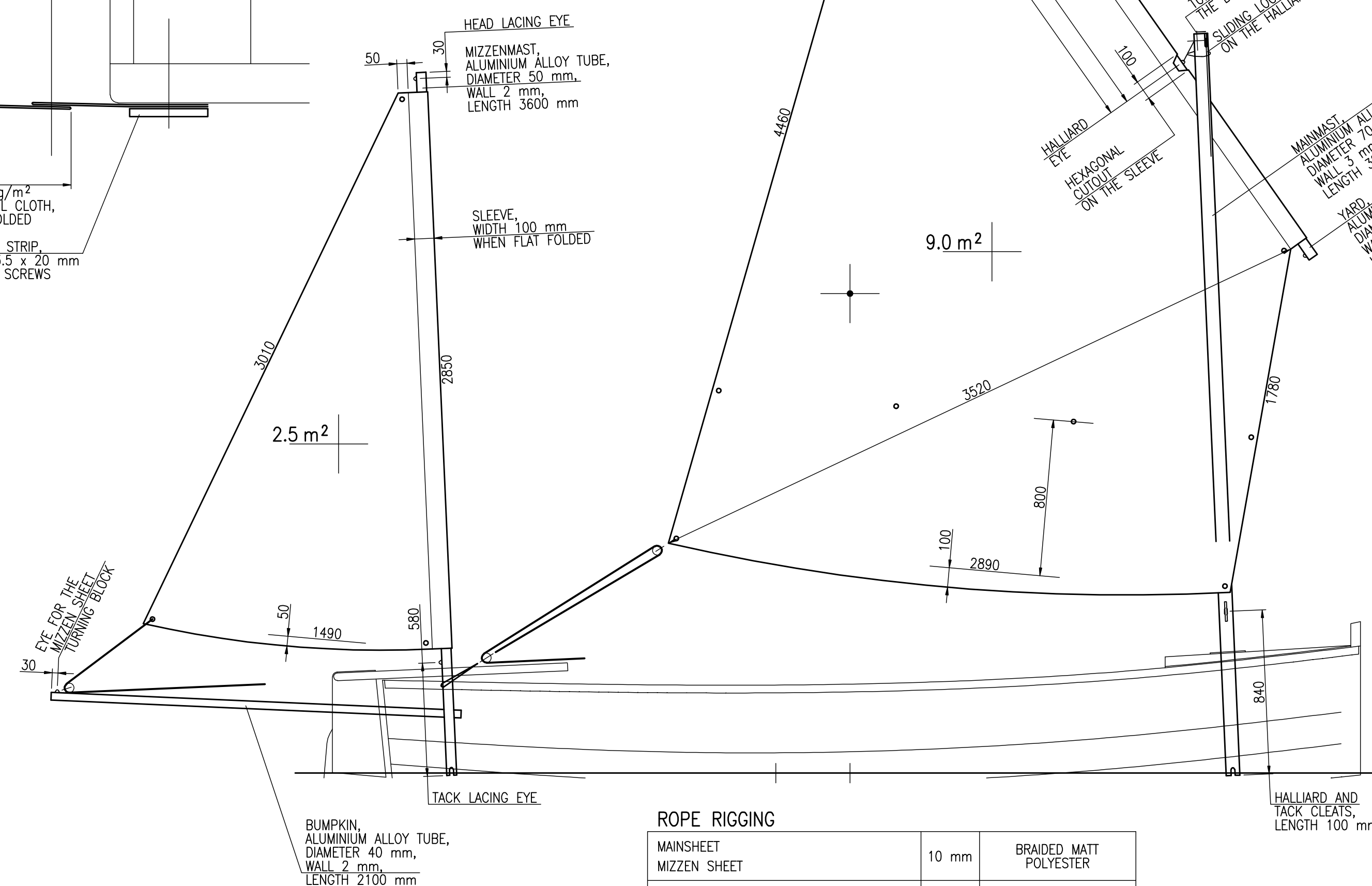
CENTRECASE SLOT CLOSURE



S-HOOK
STAINLESS STEEL

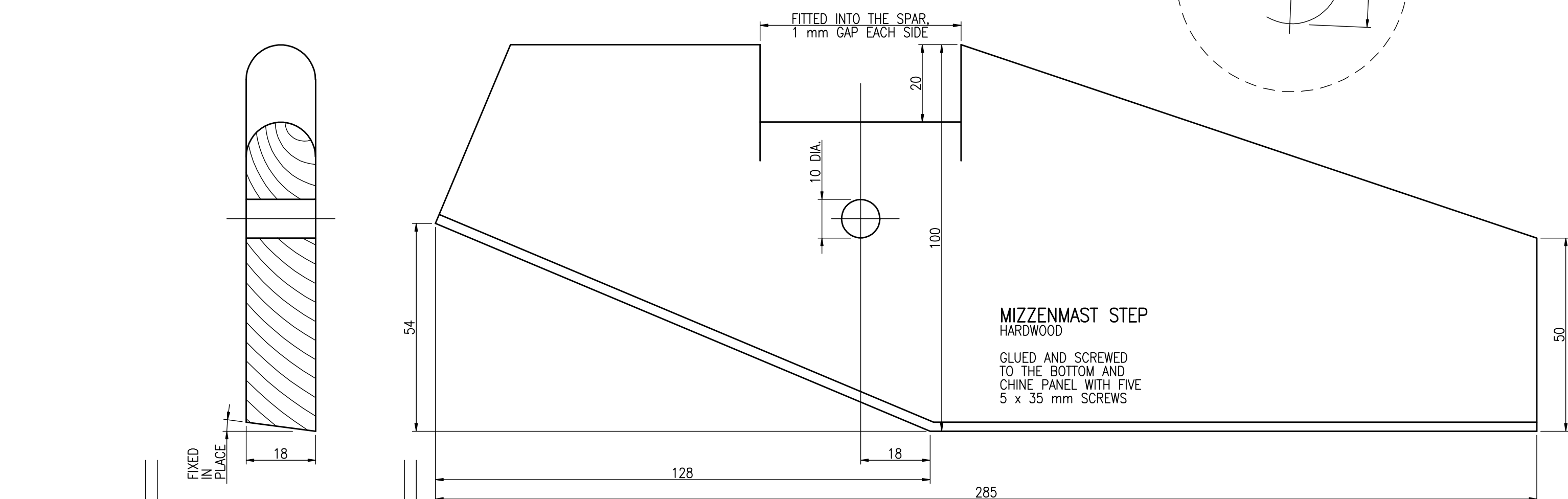


BUMPKIN TO SEAT CONNECTION
STAINLESS STEEL



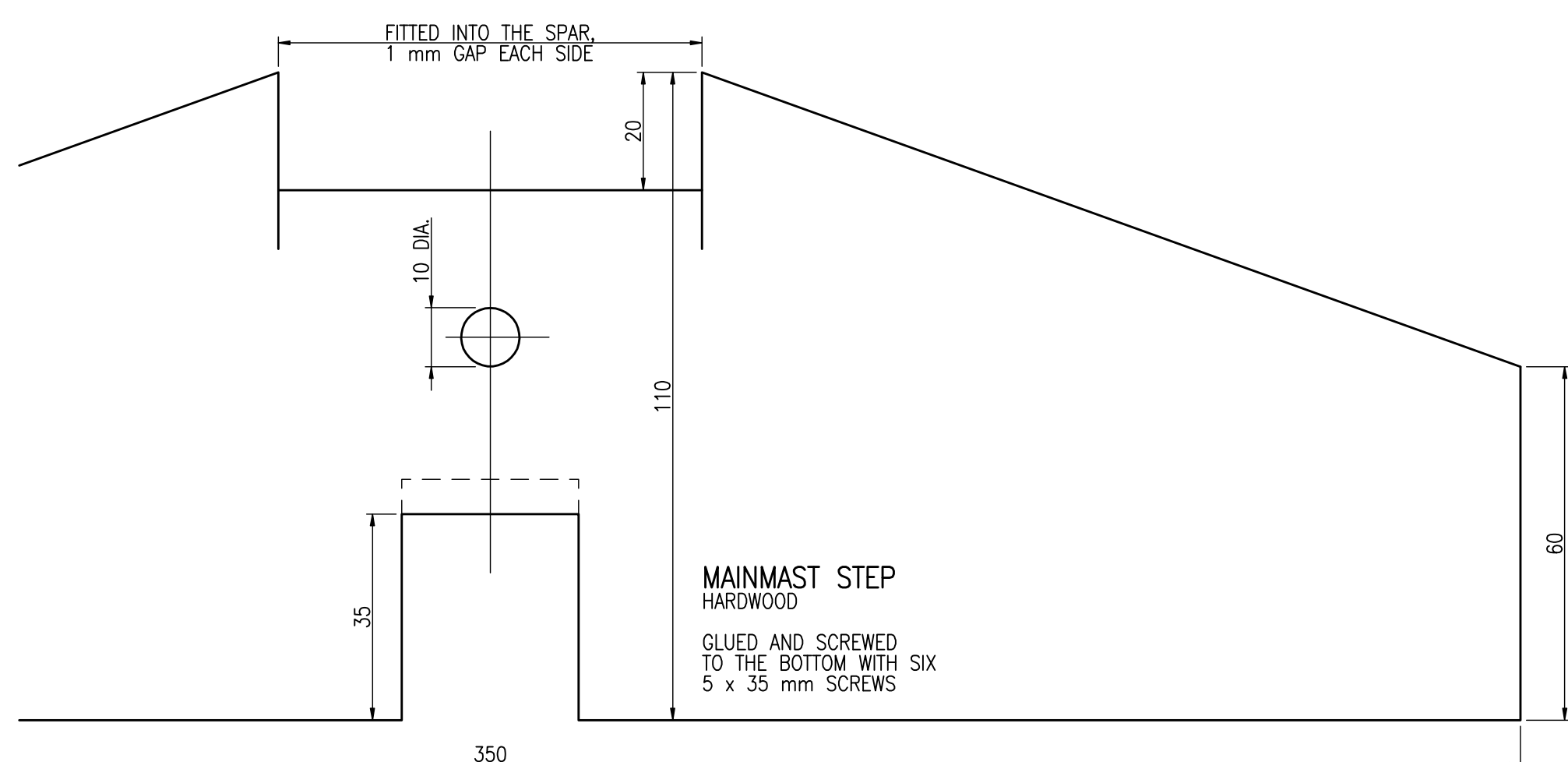
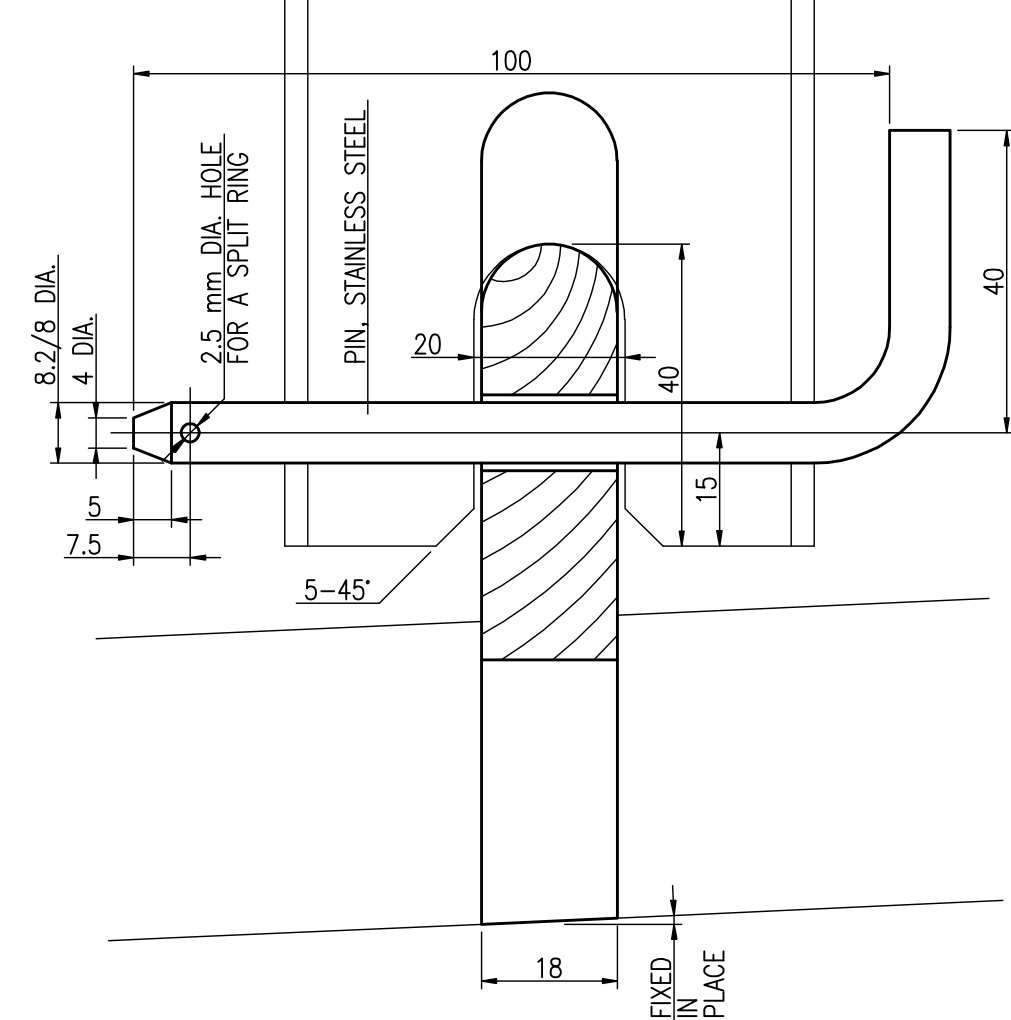
ROPE RIGGING

MAINSHEET MIZZEN SHEET	10 mm	BRAIDED MATT POLYESTER
MAINSHEET BLOCK HOOKING LOOP	8 mm	PLAID OR BRAIDED POLYESTER
MAIN HALLIARD TACK	5 mm	
CENTREBOARD UPHAUL RUDDER BLADE UPHAUL		
OUTHAULS LACINGS		



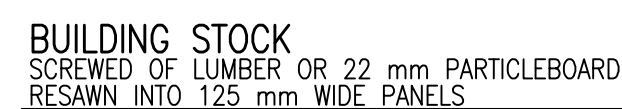
MIZZENMAST STEP
HARDWOOD

GLUED AND SCREWED
TO THE BOTTOM AND
CHINE PANEL WITH FIVE
5 x 35 mm SCREWS

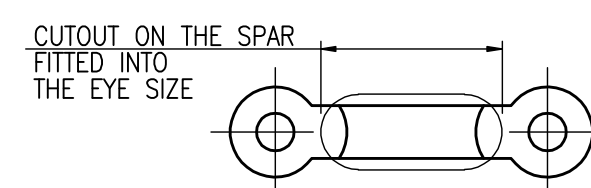
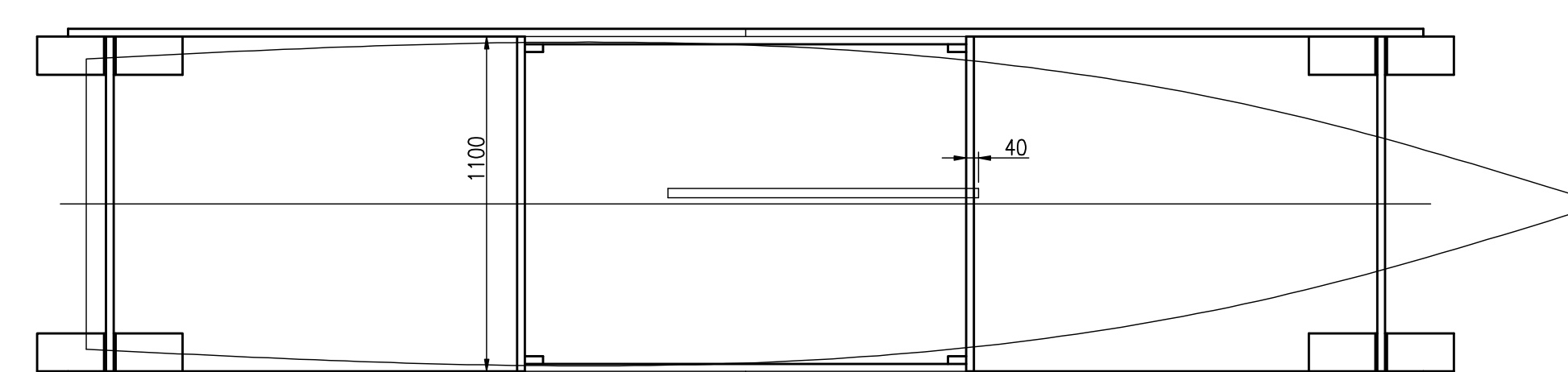
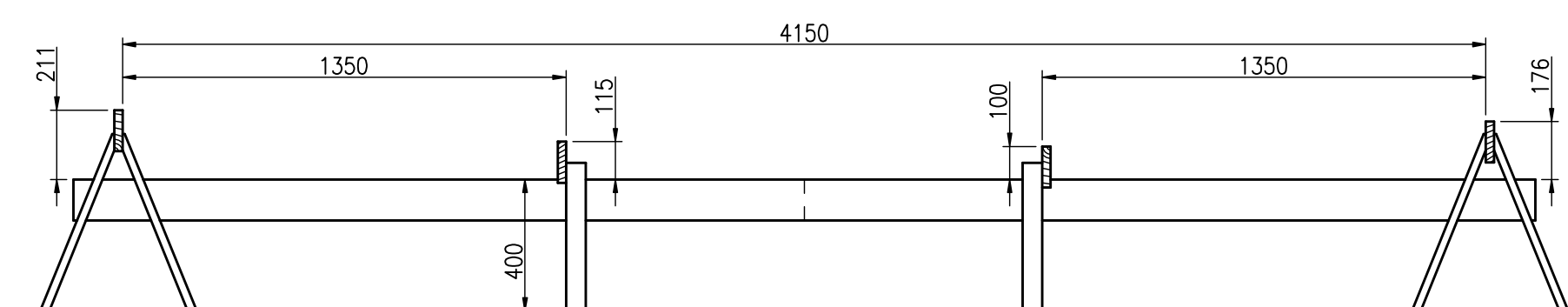


MAINMAST STEP
HARDWOOD

GLUED AND SCREWED
TO THE BOTTOM WITH SIX
5 x 35 mm SCREWS

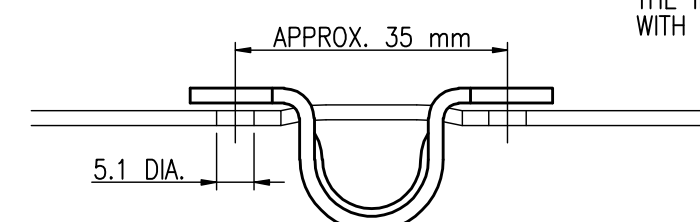


BOTTOM SET UP ON THE BUILDING STOCK
AND POSITIONED TO THE FORWARD END OF
THE CENTRECASE SLOT, THEN TEMPORARILY
FASTENED WITH FOUR SCREWS TO THE STOCK
AMIDSHIP BEAMS



EYE
STAINLESS STEEL

STOCK EYE FASTENED TO
THE INNER SIDE OF THE SPAR
WITH 5 x 10 mm POP RIVETS



5.0mm

SAILS AND SPARS
SHEET 50.4/5, SIZE A1
SCALE 1:1, 1:20

RADOSŁAW WERSZKO
APRIL 2009