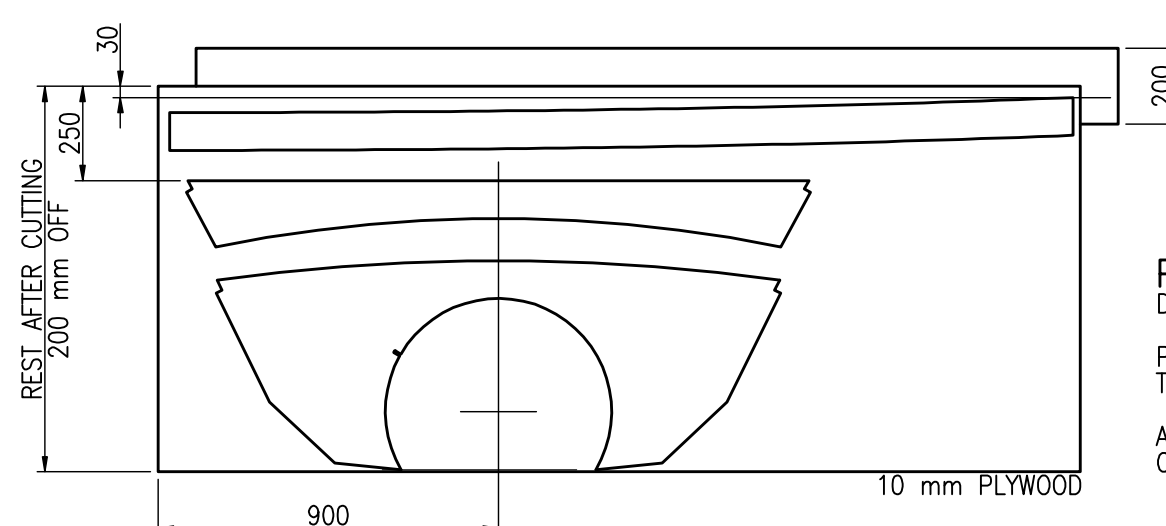
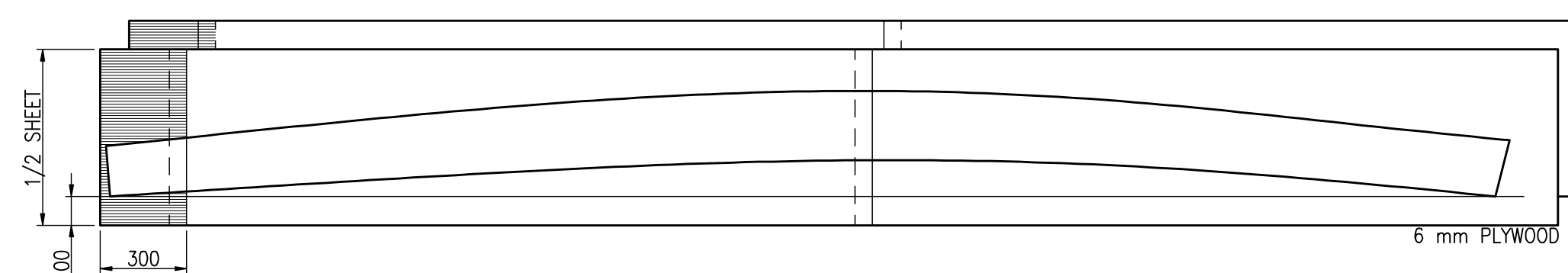
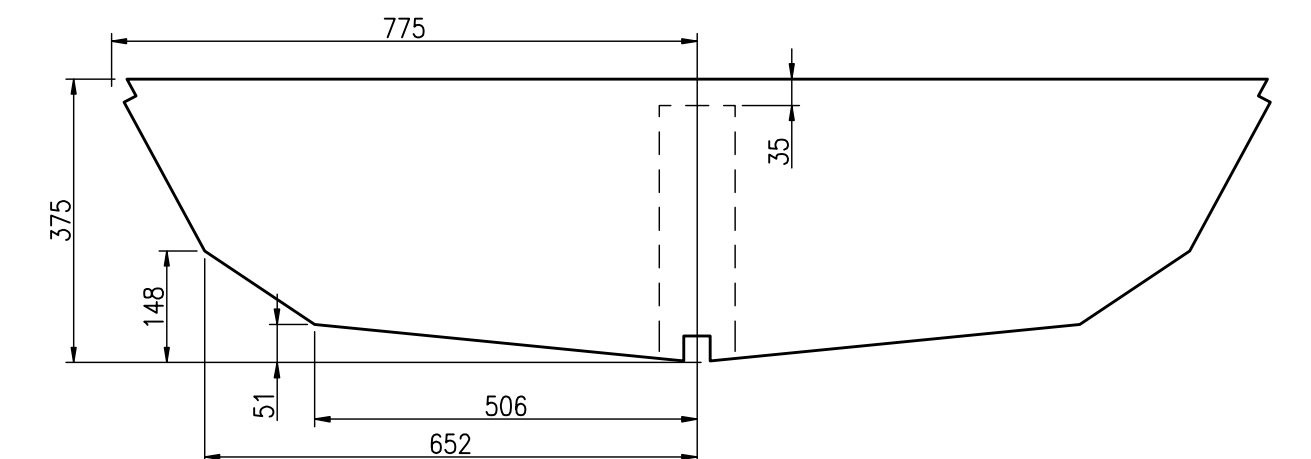


Technical drawing of a trapezoidal part. The top width is 66, the bottom width is 175, and the height is 316. A small vertical feature on the right side has a height of 17.



Technical drawing showing the backrest and seat components of a chair, with dimensions in millimeters (mm).

Backrest Component (Top):

- Overall height: 170 mm
- Width: 850 mm
- Material: 6 mm PLYWOOD
- Internal width of the lower section: 400 mm
- Internal width of the upper section: 600 mm

Seat Component (Bottom):

- Overall height: 220 mm
- Overall width: 800 mm
- Material: 6 mm PLYWOOD
- Internal width of the lower section: 400 mm
- Internal width of the upper section: 600 mm

Diagram illustrating the width of the material pieces. The width is defined as $\frac{1}{2}$ of the rest after cutting, resulting in a total width of 350 mm and 300 mm off.

4.8m HULL PANELS
SHEET 48.2/6, SIZE A1
SCALE 1:10, 1:20

RADOSŁAW WERSZKO
OCTOBER 2015