

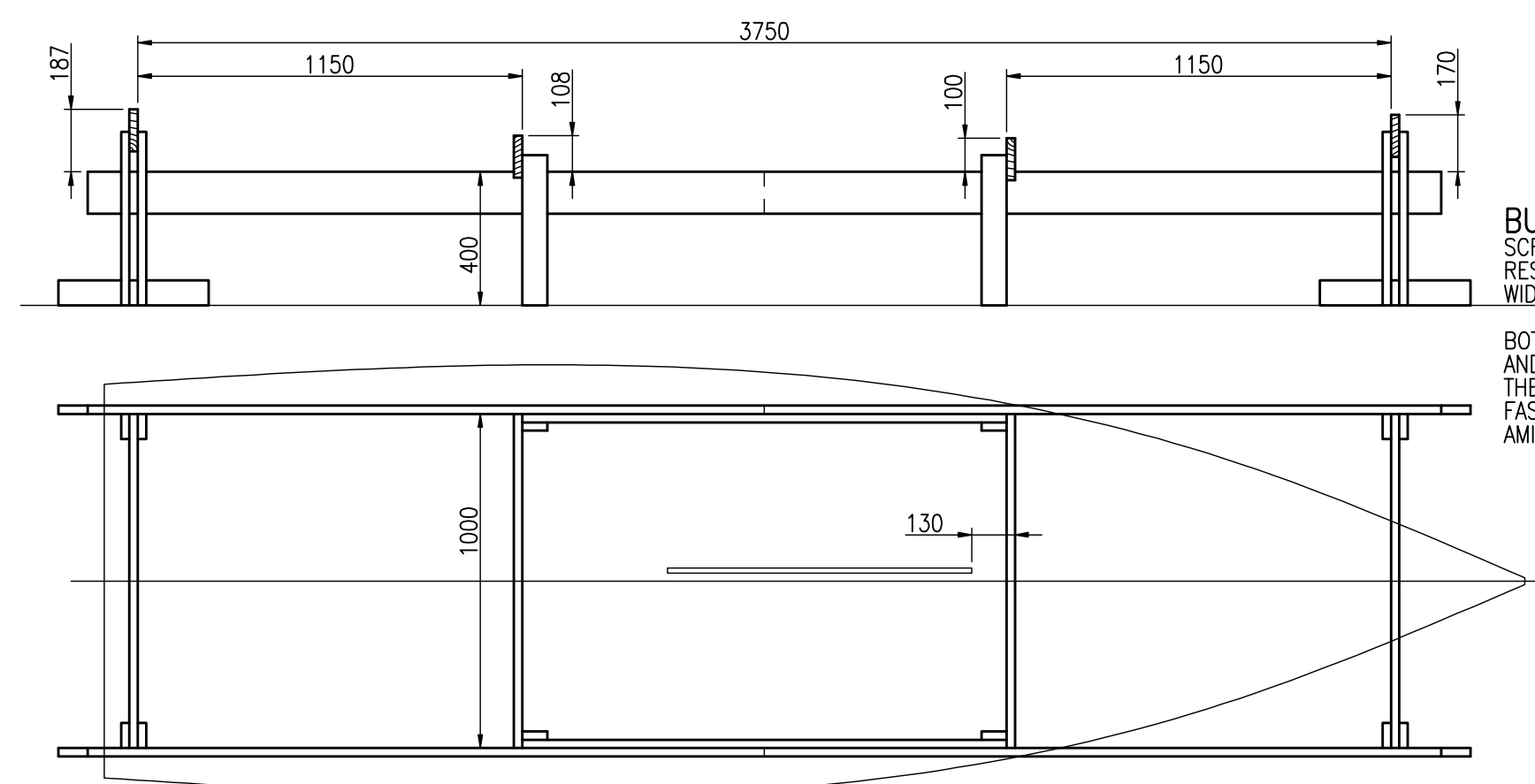
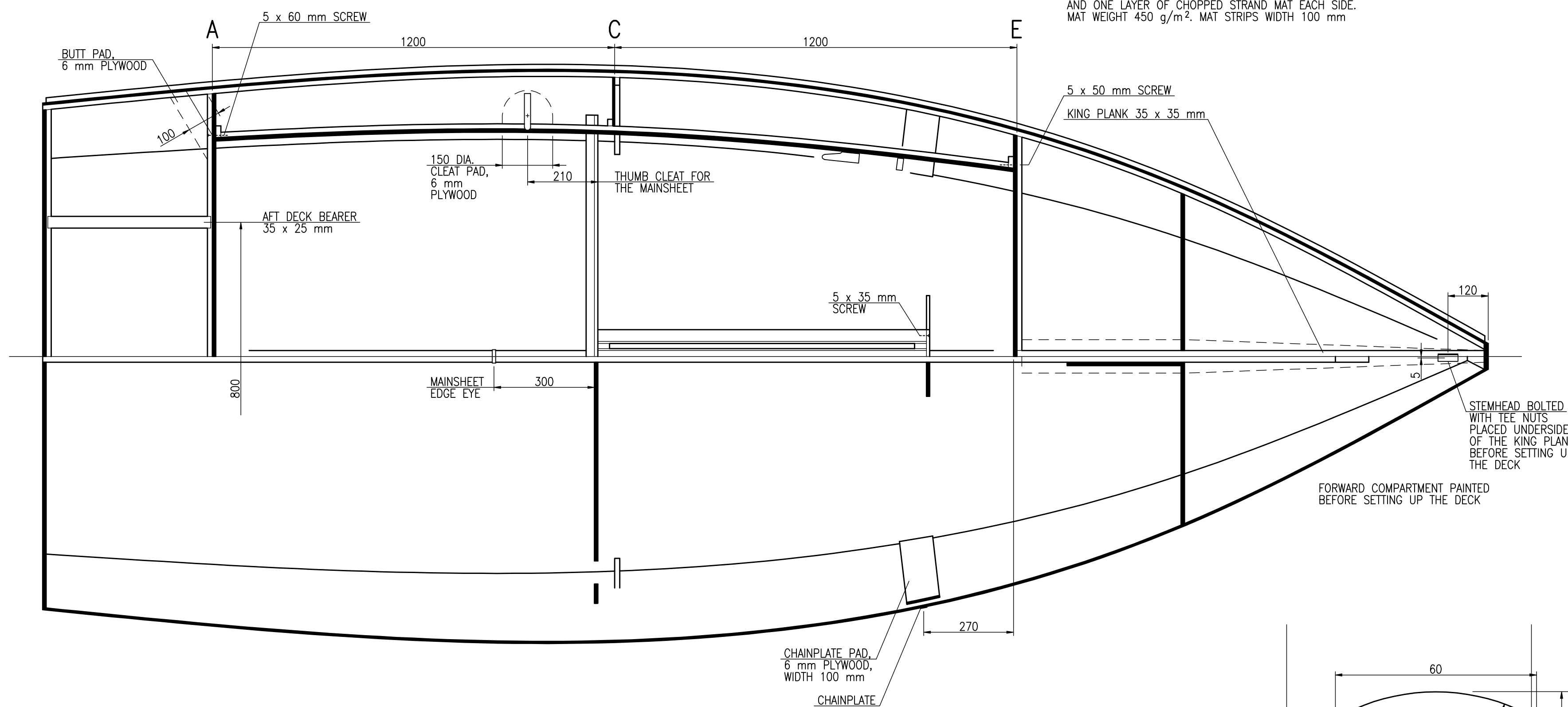
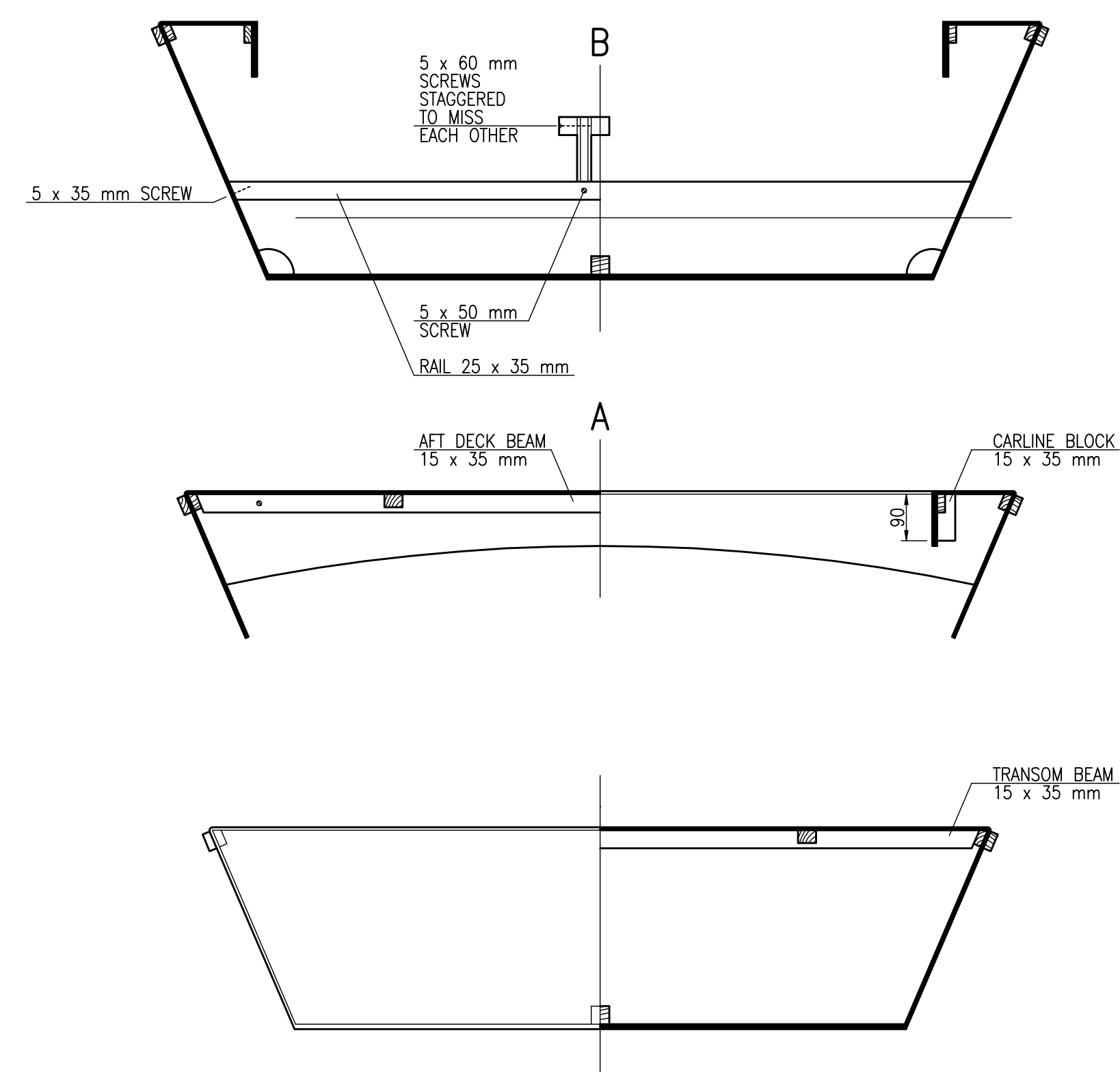
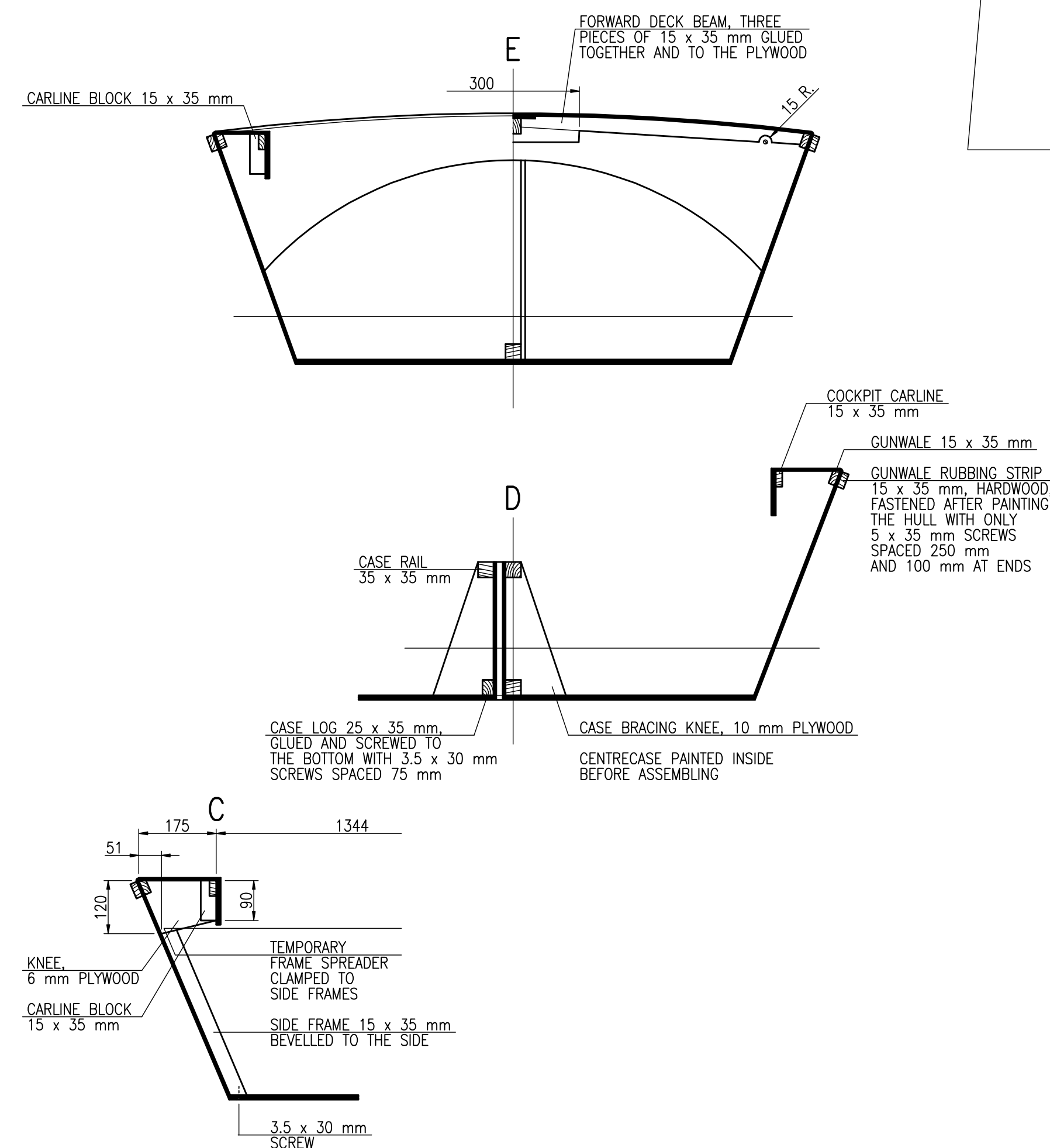
MAIN DIMENSIONS		
LENGTH OVERALL	L_{OA}	4.30 m
LENGTH OF WATERLINE	L_{WL}	4.25 m
BEAM	B	1.70 m
BEAM OF WATERLINE	B_{WL}	1.38 m
DRAFT	T_C	0.115 m
DRAFT CENTREBOARD DOWN	T	0.77 m
FREEBOARD AFT	F_A	0.365 m
FREEBOARD FORWARD	F_F	0.515 m
VOLUME DISPLACEMENT	∇	0.37 m ³

ALL OTHER PLYWOOD TO TIMBER JOINTS GLUED
AND NAILED WITH 1.2 x 20 mm NAILS SPACED 50 mm

ALL PLYWOOD PADS AND BUTT STRIPS GLUED AND
NAILED WITH 1 x 12 mm NAILS SPACED 50 x 50 mm

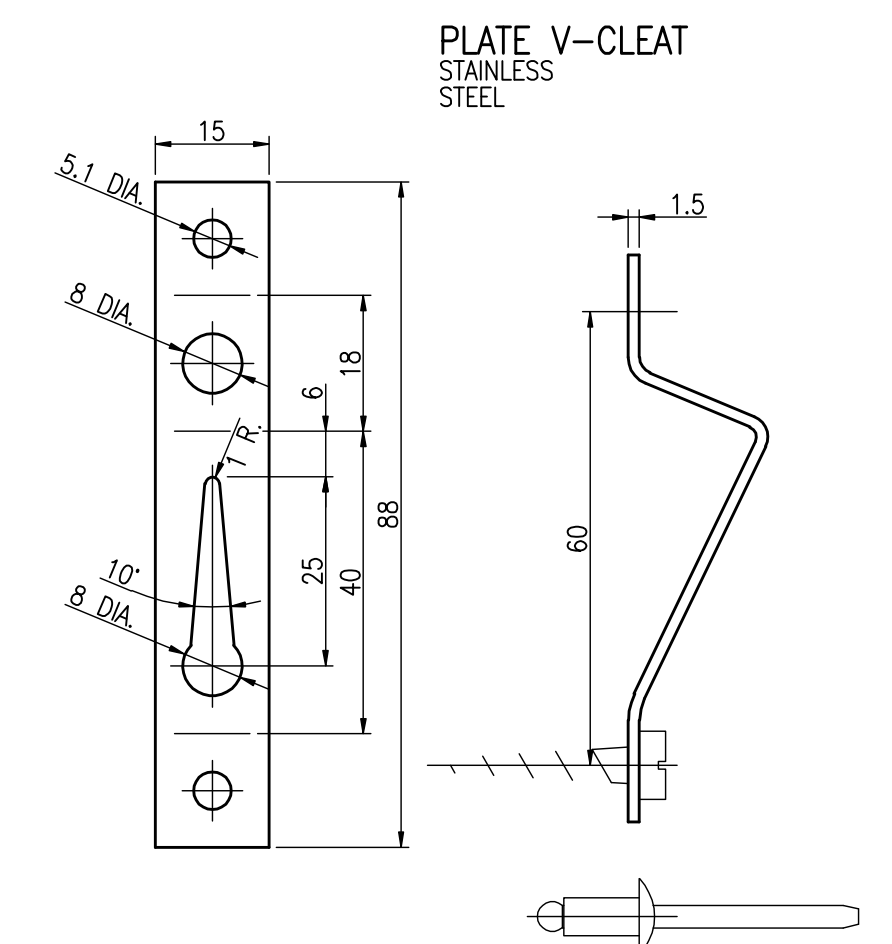
ALL NAILS OF BRASS. ALL SCREWS OF BRASS
OR STAINLESS STEEL

ALL PLYWOOD TO PLYWOOD JOINTS WITHOUT TIMBER, FIRST STITCHED WITH 1-1.5 mm COPPER WIRE, THEN TAPED BOTH SIDES WITH EPOXY OR POLYESTER RESIN AND ONE LAYER OF CHOPPED STRAND MAT EACH SIDE. MAT WEIGHT 450 g/m². MAT STRIPS WIDTH 100 mm



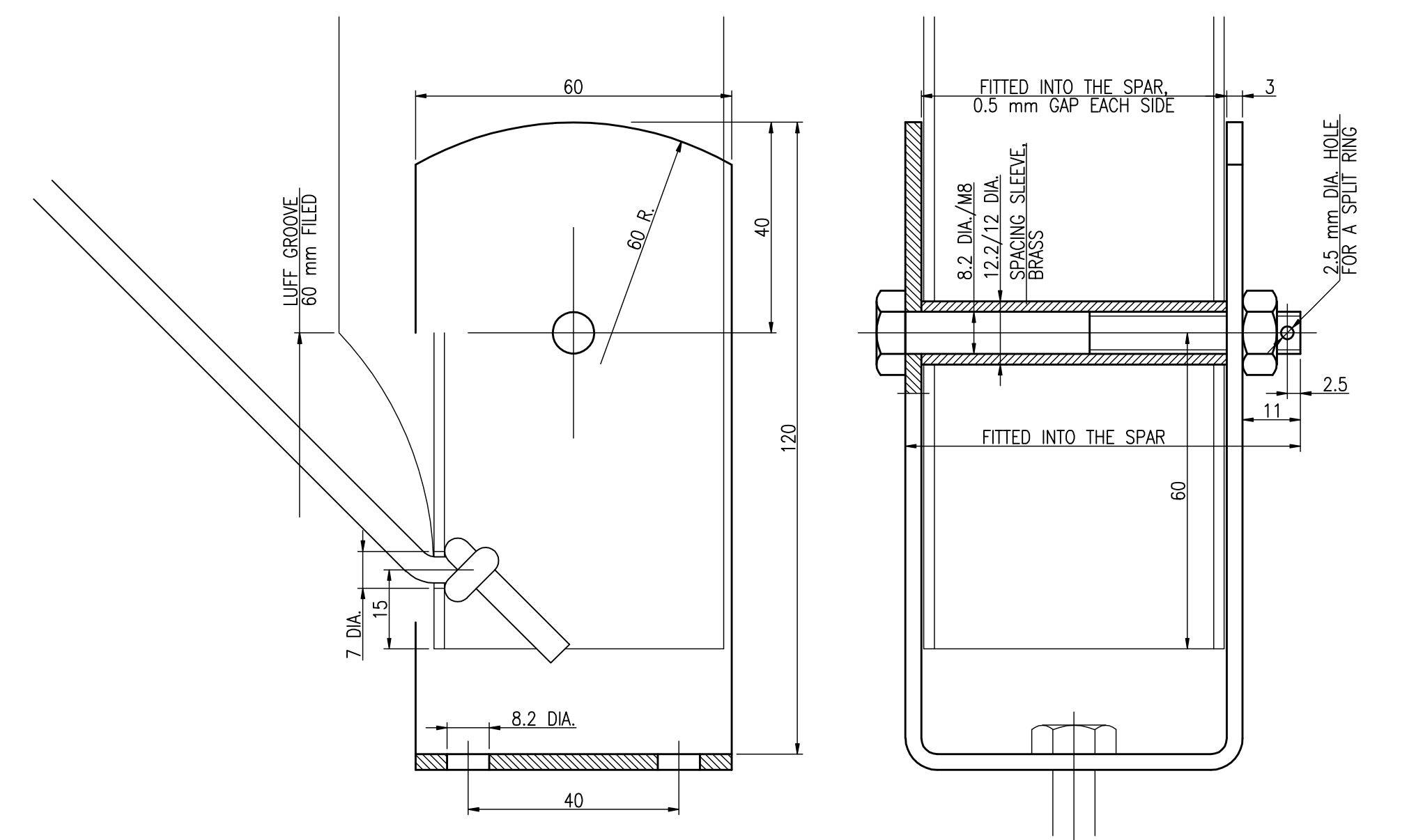
BUILDING STOCK
SCREWED OF 22 mm PARTICLEBOARD
RESAWN INTO 75 mm AND 125 mm
WIDE PANELS

BOTTOM SET UP ON THE BUILDING STOCK
AND POSITIONED TO THE FORWARD END OF
THE CENTRECASE SLOT, THEN TEMPORARILY
FASTENED WITH FOUR SCREWS TO THE STOCK
AMIDSHIP BEAMS



MAST TABERNACLE
STAINLESS STEEL

FASTENED WITH M8 STAINLESS
STEEL BOLTS, NUTS AND FENDER
WASHERS



4.3m HULL CONSTRUCTION
SHEET 43.2/4, SIZE A1
SCALE 1:1, 1:10, 1:20

RADOSŁAW WERSZKO
NOVEMBER 2020