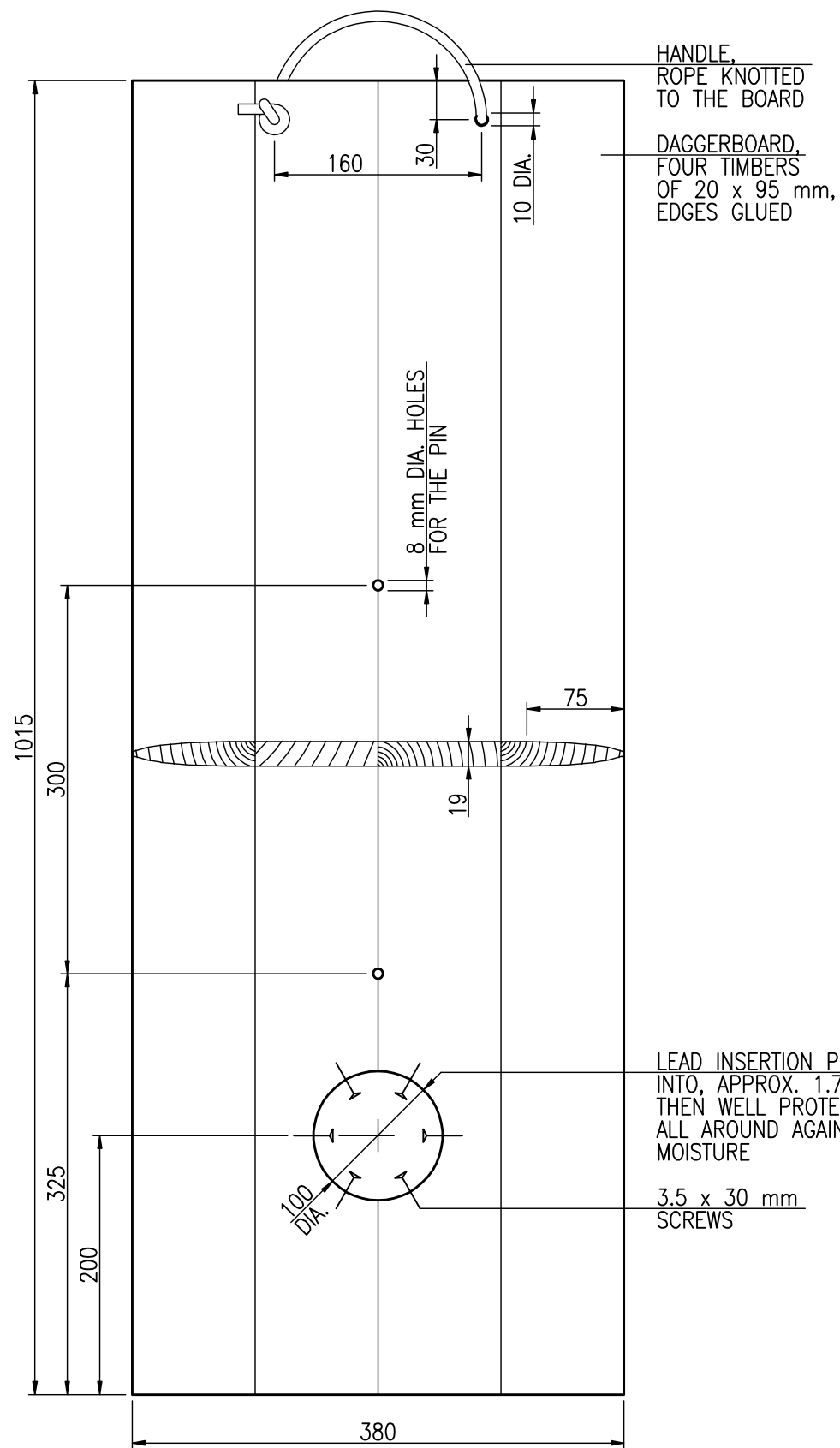
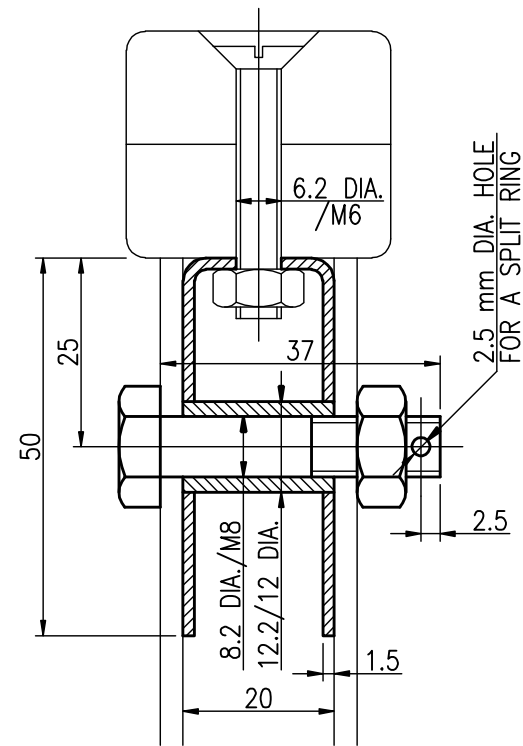


TILLER AND STOCK CONNECTION STAINLESS STEEL

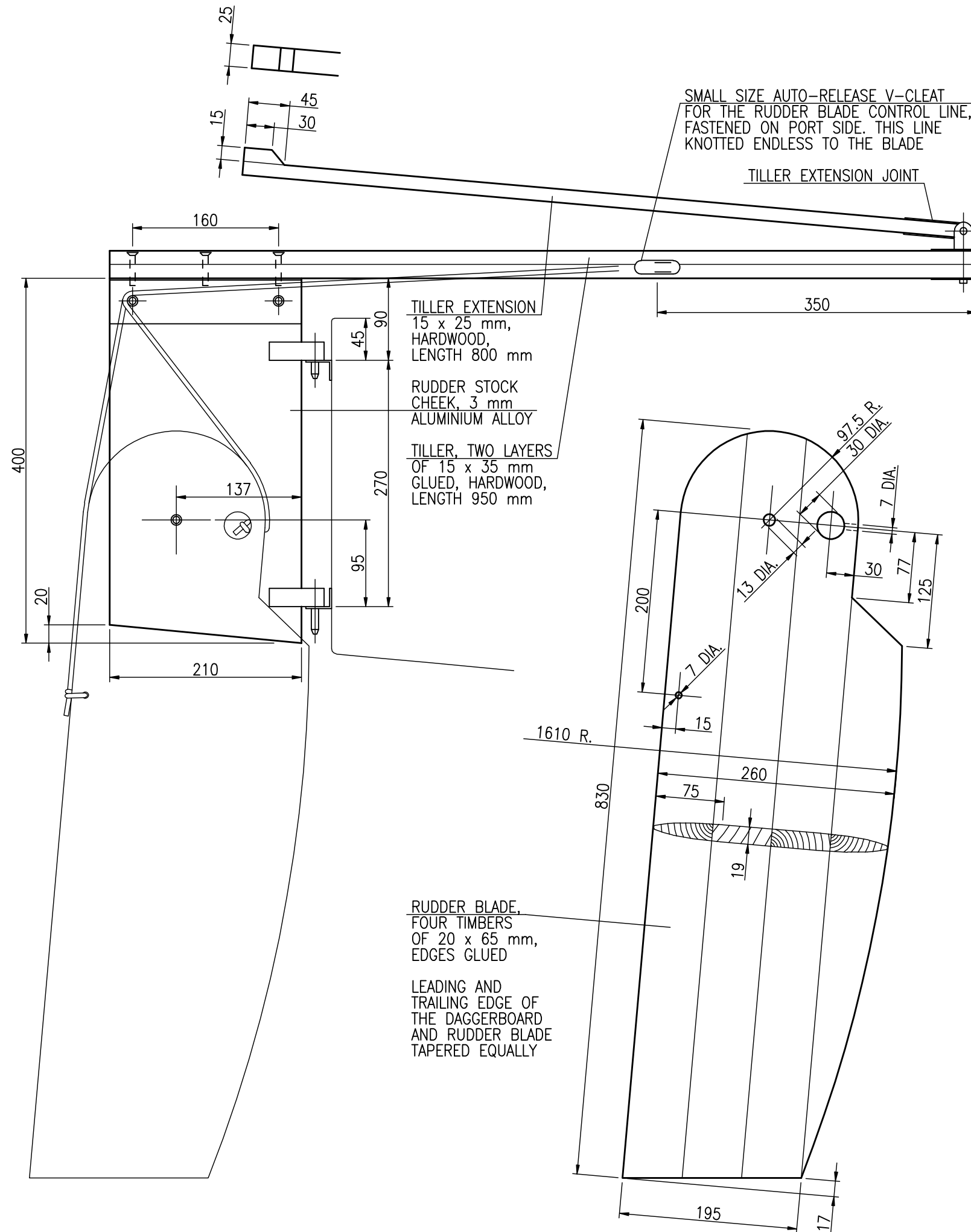


HANDLE,
ROPE KNOTTED
TO THE BOARD

DAGGERBOARD,
FOUR TIMBERS
OF 20 x 95 mm,
EDGES GLUED

LEAD INSERTION POURED
INTO, APPROX. 1.7 kg,
THEN WELL PROTECTED
ALL AROUND AGAINST
MOISTURE

3.5 x 30 mm
SCREWS



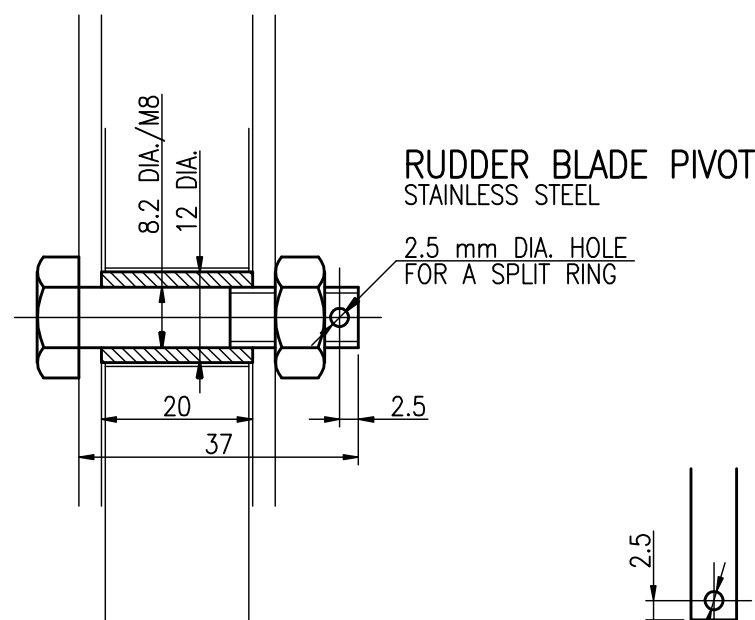
TILLER EXTENSION
15 x 25 mm,
HARDWOOD,
LENGTH 800 mm

RUDDER STOCK
CHEEK, 3 mm
ALUMINIUM ALLOY

TILLER, TWO LAYERS
OF 15 x 35 mm,
GLUED, HARDWOOD,
LENGTH 950 mm

RUDDER BLADE,
FOUR TIMBERS
OF 20 x 65 mm,
EDGES GLUED

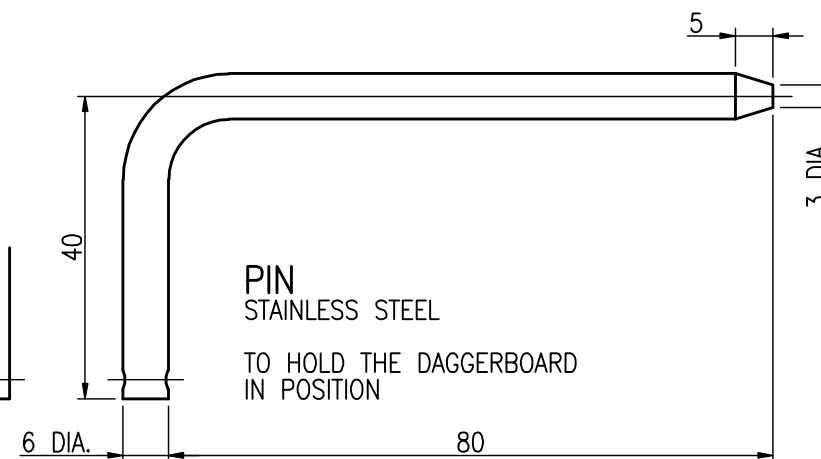
LEADING AND
TRAILING EDGE OF
THE DAGGERBOARD
AND RUDDER BLADE
TAPERED EQUALLY



RUDDER BLADE PIVOT
STAINLESS STEEL

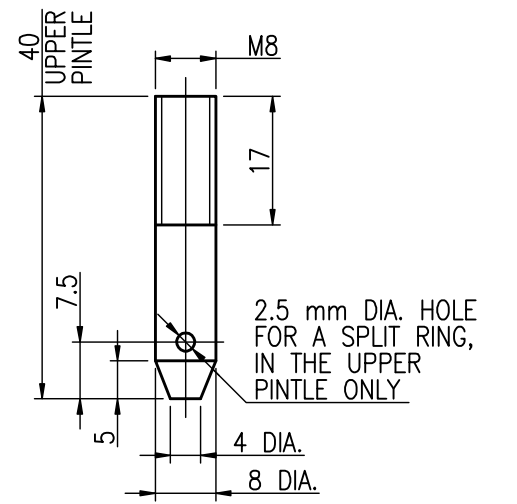
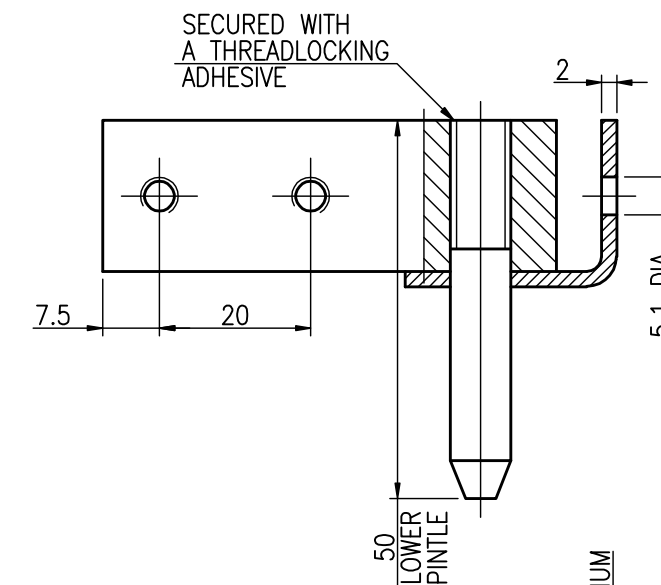
2.5 mm DIA. HOLE
FOR A SPLIT RING

2.5 mm DIA. HOLE
FOR A SPLIT RING AND
RETAINING LANIARD



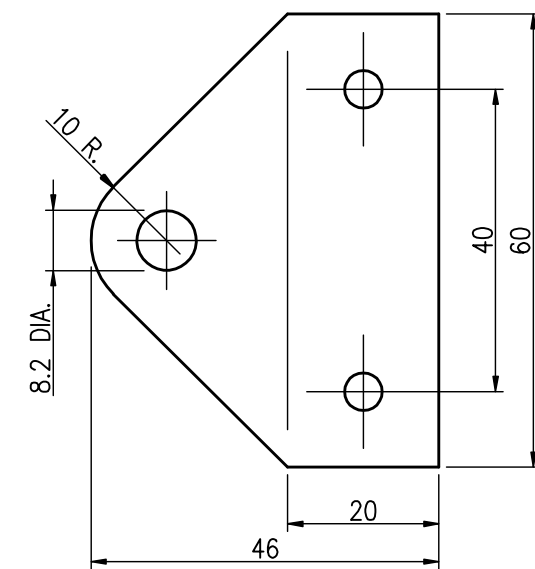
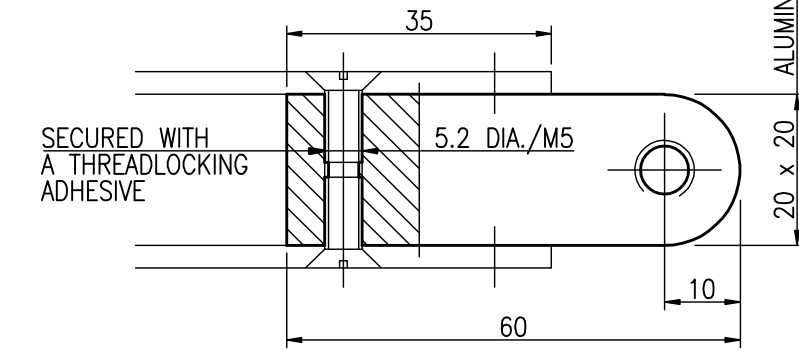
PIN
STAINLESS STEEL

TO HOLD THE DAGGERBOARD
IN POSITION



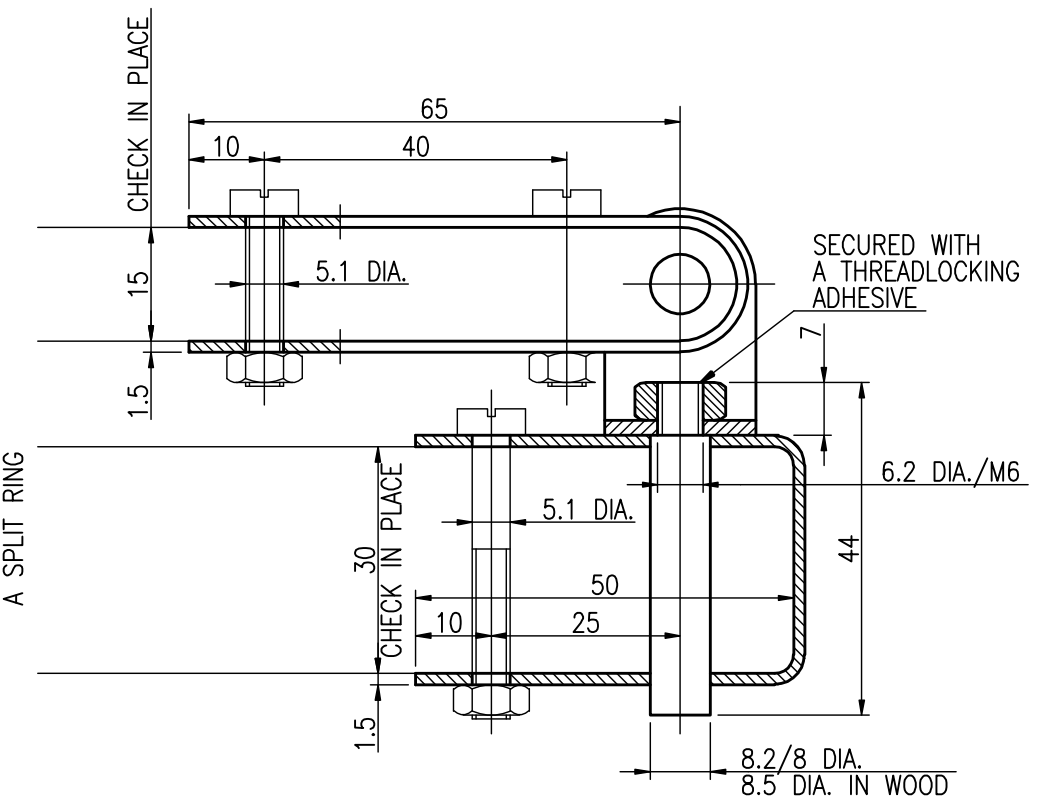
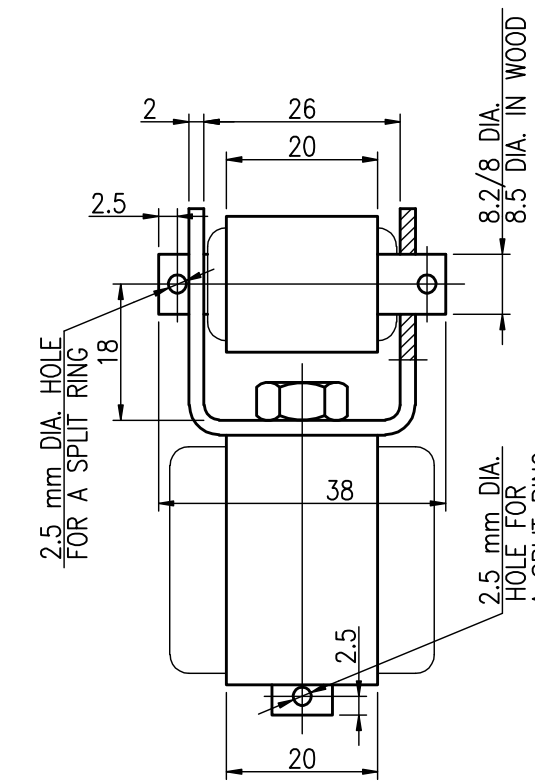
PINTLE AND GUDGEON
STAINLESS STEEL

GUDGEONS FASTENED
TO THE TRANSOM WITH
M5 STAINLESS STEEL BOLTS



TILLER EXTENSION JOINT
STAINLESS STEEL

FASTENED WITH M5
STAINLESS STEEL BOLTS



3.8m

DAGGERBOARD AND RUDDER
SHEET 38.5/6, SIZE A2
SCALE 1:1, 1:5

RADOSŁAW WERSZKO
JANUARY 2007, OCTOBER 2011, JUNE 2015