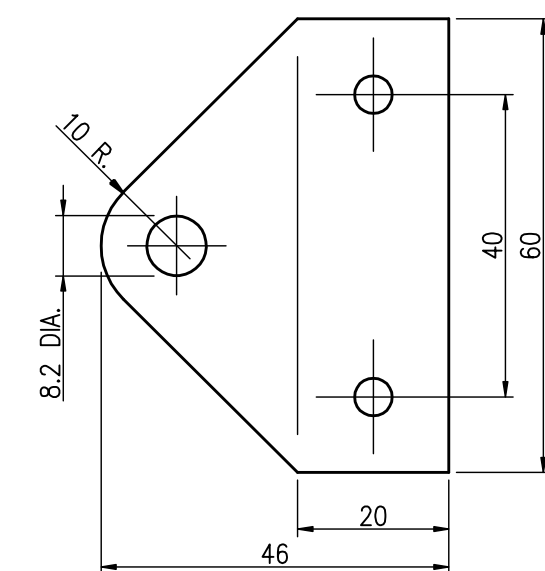
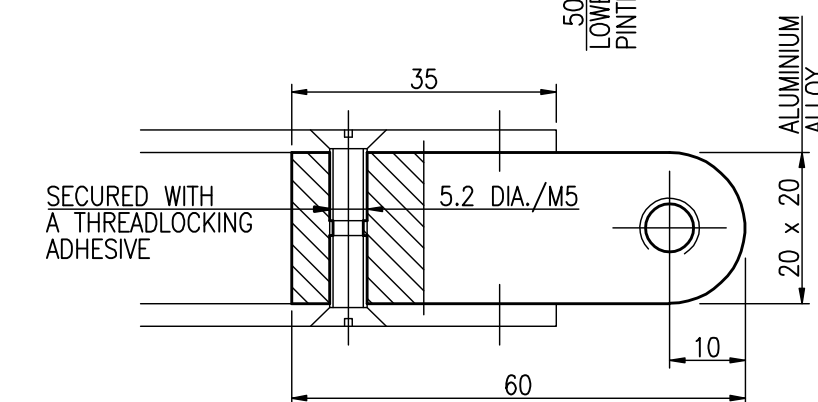
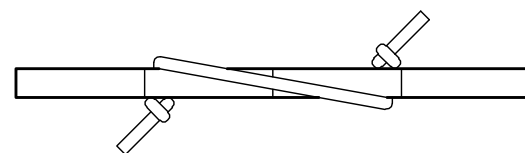
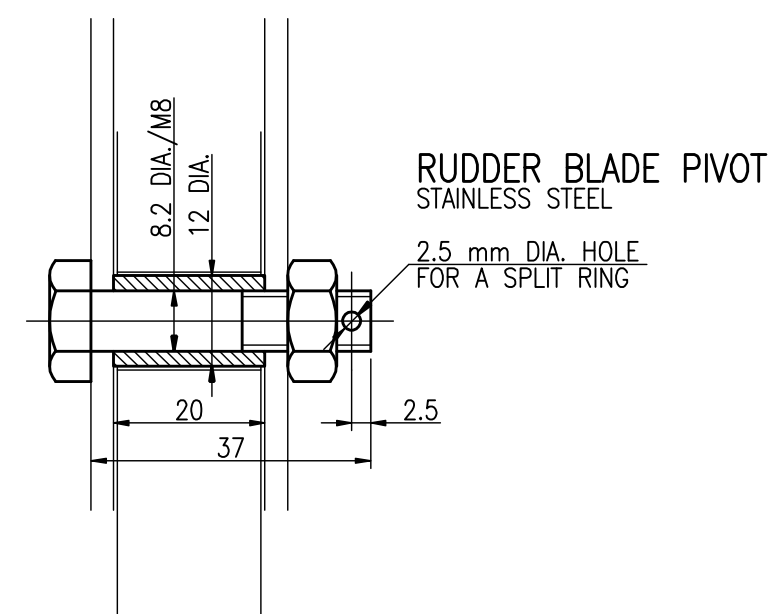


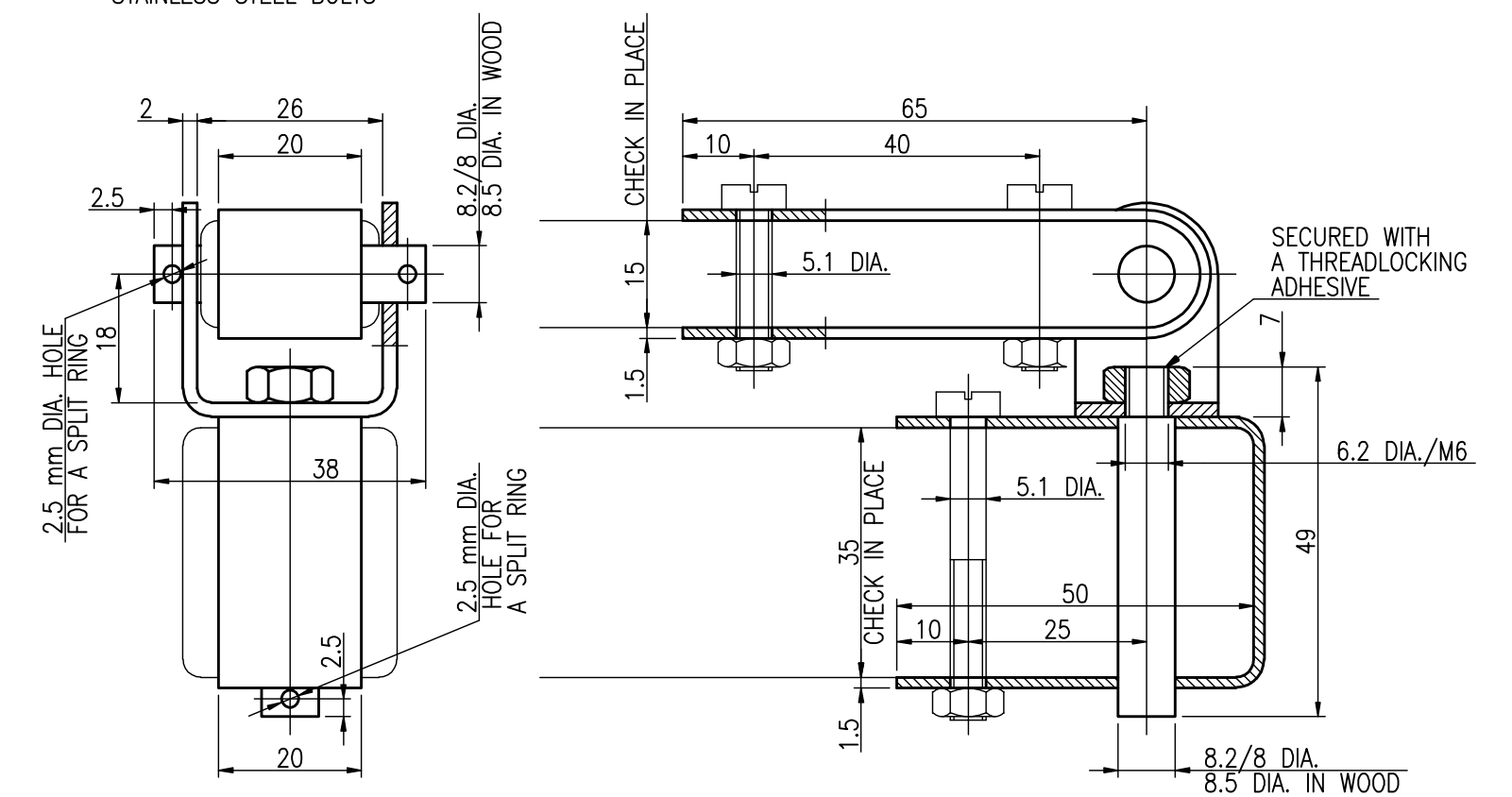
Technical drawing of a split ring assembly. The drawing shows a cross-section of the assembly with the following dimensions and features:

- Overall length: 68
- Distance from the left end to the center of the split ring: 20
- Distance from the center of the split ring to the right end: 2.5
- Outer diameter of the main body: 24 DIA.
- Inner diameter of the main body: 8.5 DIA.
- Outer diameter of the split ring: 12 DIA.
- Inner diameter of the split ring: 8.2 DIA / M8
- Feature: 2.5 mm DIA. HOLE FOR A SPLIT RING



GUDGEONS FASTENED
TO THE TRANSOM WITH
M5 STAINLESS STEEL BOLTS

FASTENED WITH M5
STAINLESS STEEL BOLTS



3.5m

DAGGERBOARD AND RUDDER
SHEET 35.5/5, SIZE A2
SCALE 1:1, 1:5

RADOSŁAW WERSZKO
SEPTEMBER 2012