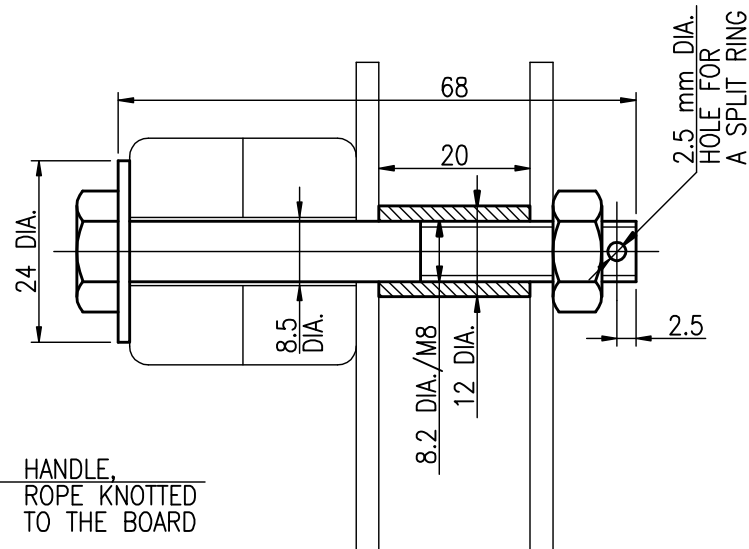


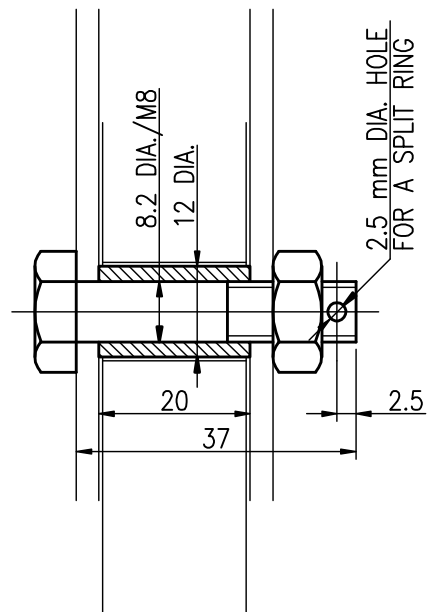
TILLER AND STOCK CONNECTION

STAINLESS STEEL



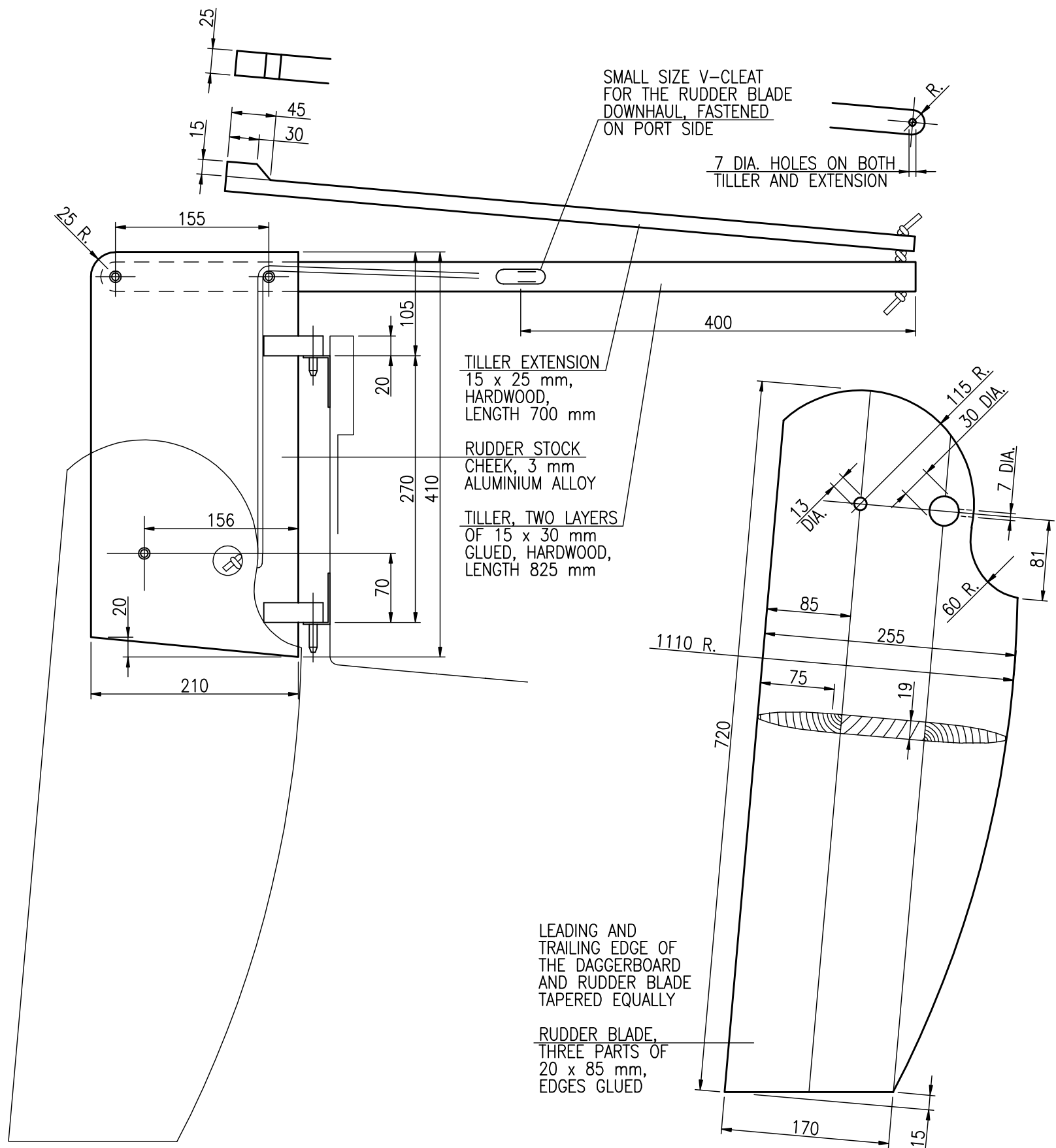
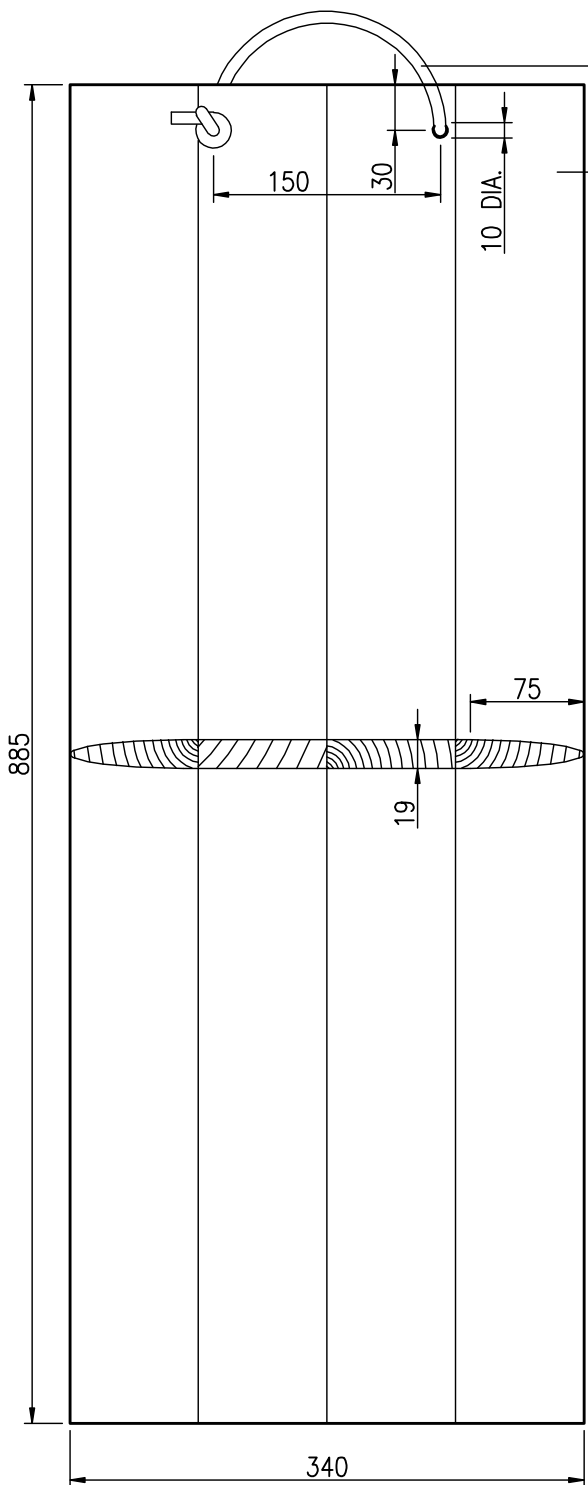
HANDLE,
ROPE KNOTTED
TO THE BOARD

DAGGERBOARD,
FOUR PARTS OF
20 x 85 mm,
EDGES GLUED



RUDDER BLADE PIVOT

STAINLESS STEEL



LEADING AND TRAILING EDGE OF THE DAGGERBOARD AND RUDDER BLADE TAPERED EQUALLY

RUDDER BLADE,
THREE PARTS OF
20 x 85 mm,
EDGES GLUED

3.1m

DAGGERBOARD AND RUDDER
SHEET 31.4/4, SIZE A3
SCALE 1:1, 1:5

RADOSŁAW WERSZKO
JUNE 2009, JANUARY 2011