

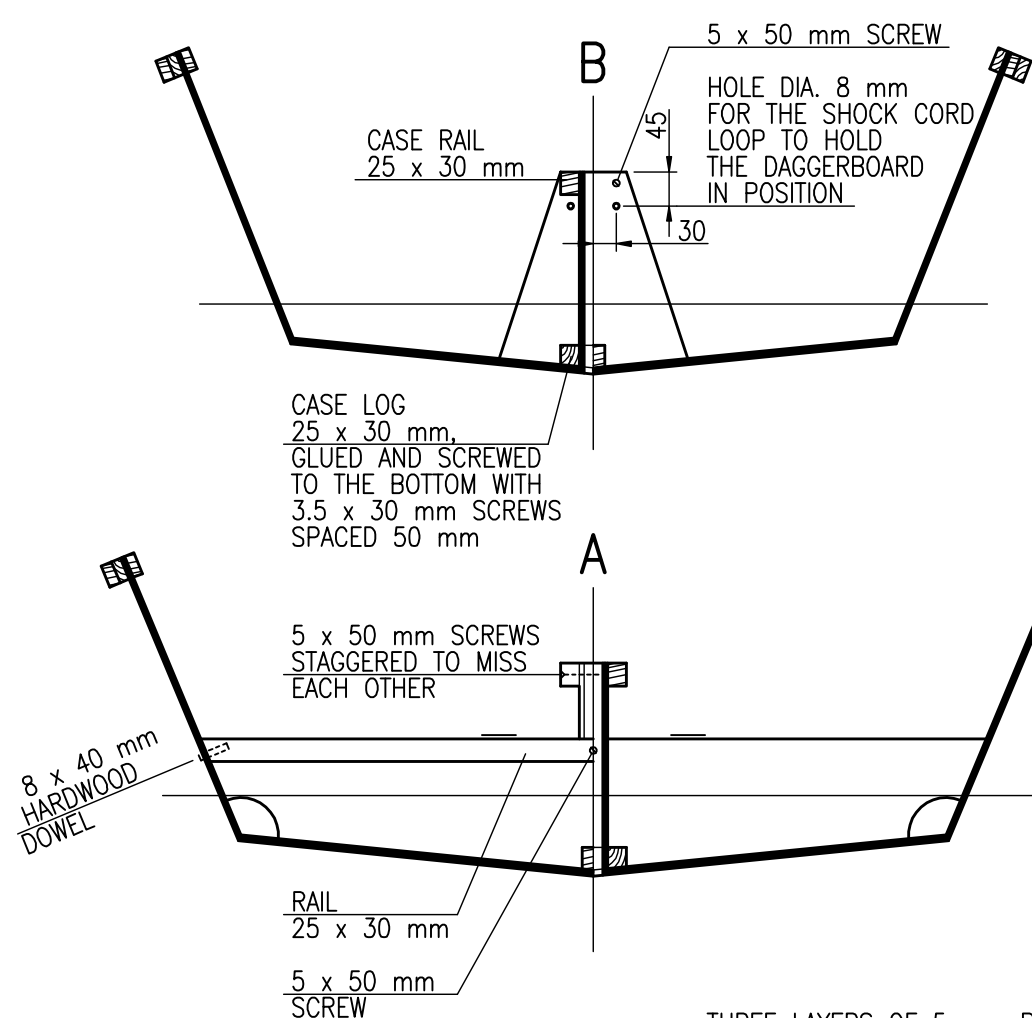
## MAIN DIMENSIONS

LENGTH OVERALL	$L_{OA}$	2.60 m
LENGTH OF WATERLINE	$L_{WL}$	2.55 m
BEAM	B	1.30 m
BEAM OF WATERLINE	$B_{WL}$	1.04 m
DRAFT	$T_C$	0.10 m
DRAFT DAGGERBOARD DOWN	T	0.55 m
FREEBOARD AFT	$F_A$	0.30 m
FREEBOARD FORWARD	$F_F$	0.425 m
VOLUME DISPLACEMENT	$\nabla$	0.11 m <sup>3</sup>

ALL OTHER PLYWOOD TO TIMBER JOINTS GLUED AND NAILED WITH 1.2 x 17 mm NAILS SPACED 50 mm

ALL NAILS OF BRASS. ALL SCREWS OF BRASS OR STAINLESS STEEL

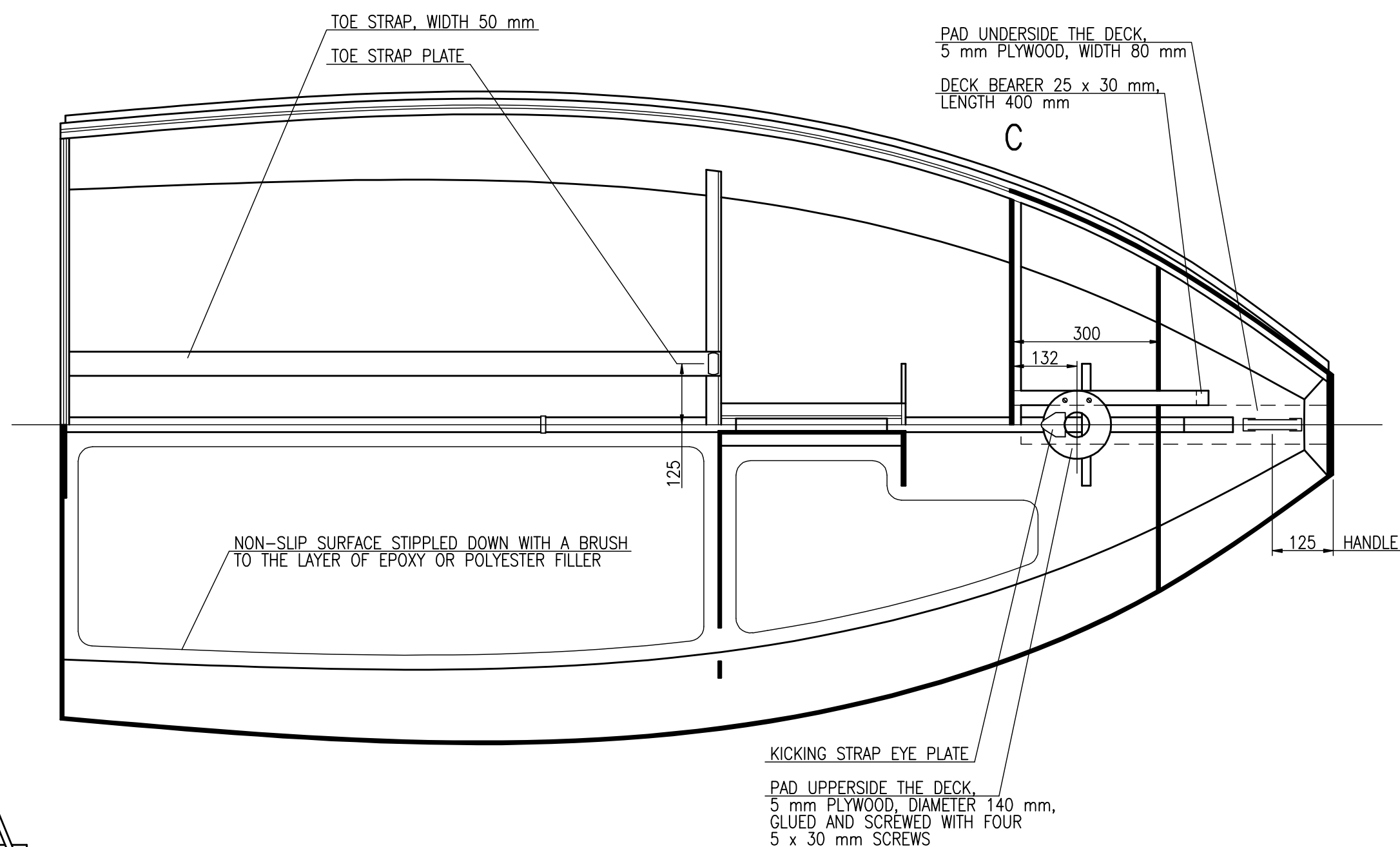
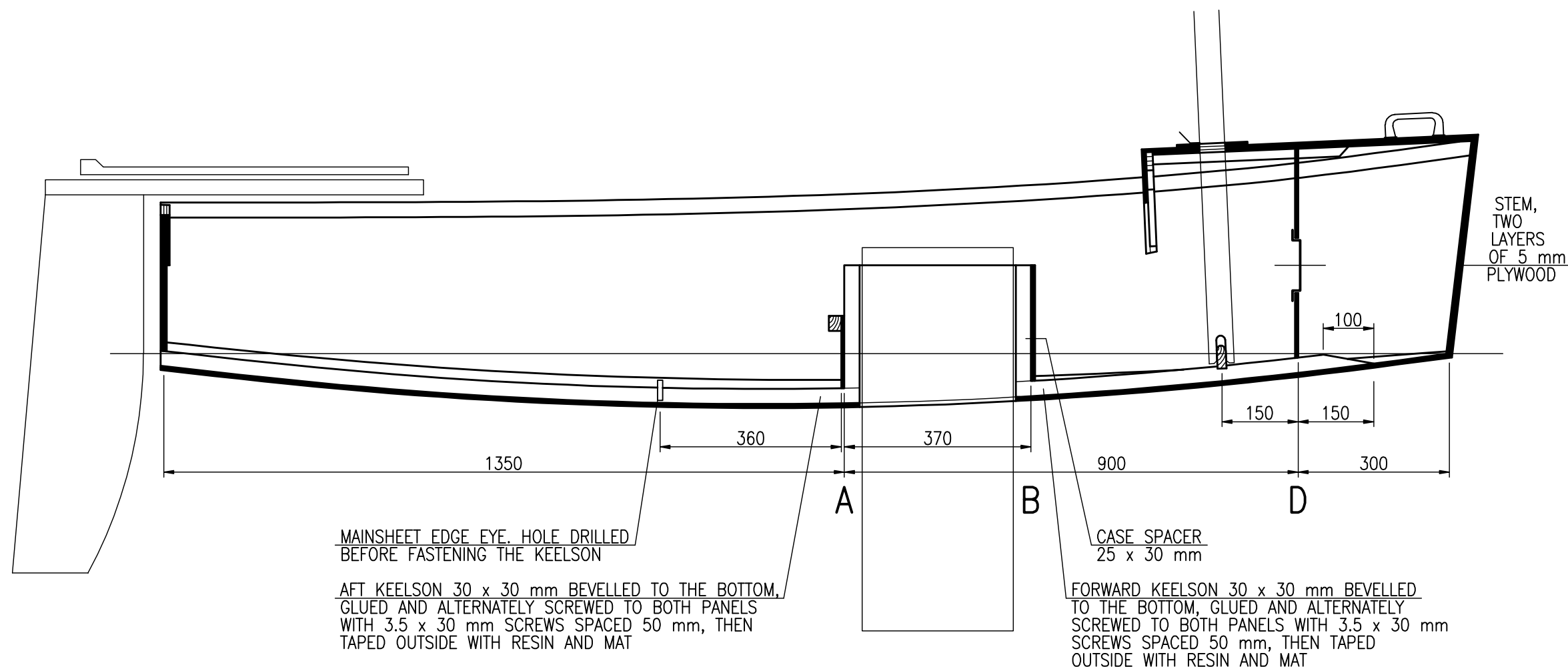
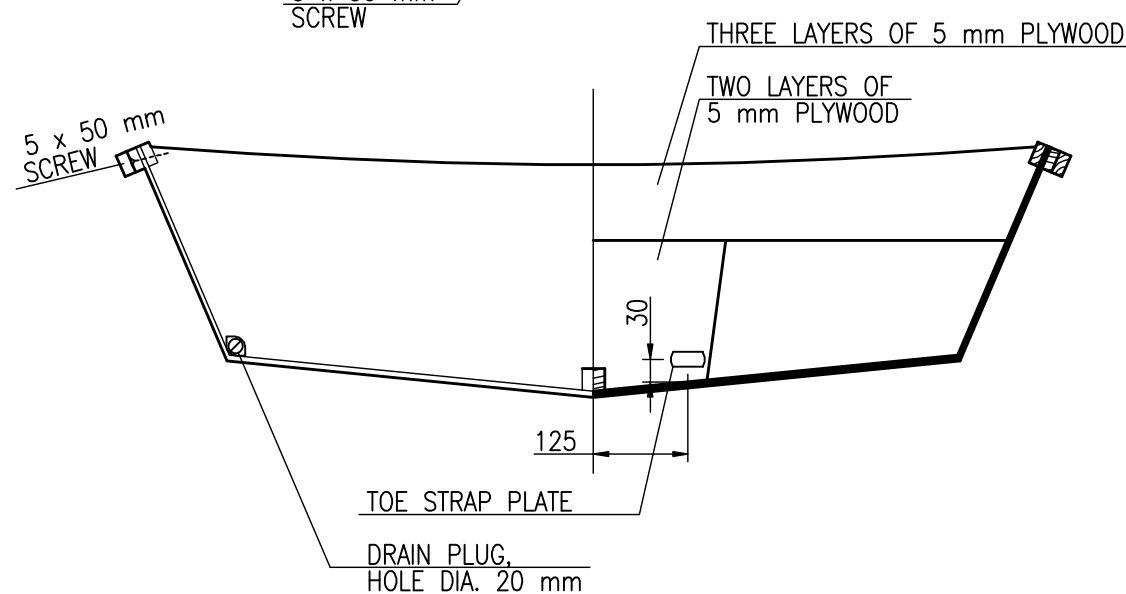
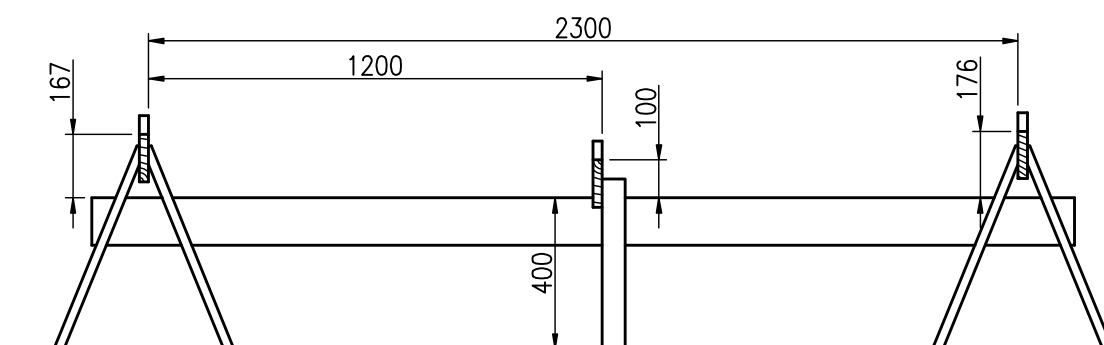
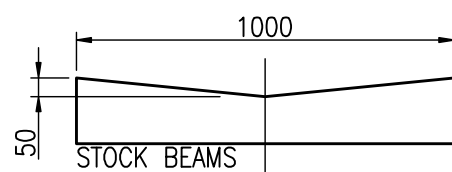
ALL PLYWOOD TO PLYWOOD JOINTS WITHOUT TIMBER, FIRST STITCHED WITH 1-1.5 mm COPPER WIRE, THEN TAPED BOTH SIDES WITH EPOXY OR POLYESTER RESIN AND ONE LAYER OF CHOPPED STRAND MAT EACH SIDE. MAT WEIGHT 450 g/m<sup>2</sup>. MAT STRIPS WIDTH 100 mm



INNER GUNWALE 13 x 30 mm

OUTER GUNWALE 13 x 30 mm, TAPERED THE WHOLE THICKNESS ALONG THE FOREDECK BEFORE FASTENING, GLUED AND NAILED WITH 1.4 x 25 mm NAILS SPACED 125

GUNWALE RUBBING STRIP 15 x 30 mm, HARDWOOD, FASTENED AFTER PAINTING THE HULL WITH ONLY 5 x 35 mm SCREWS SPACED 200 mm

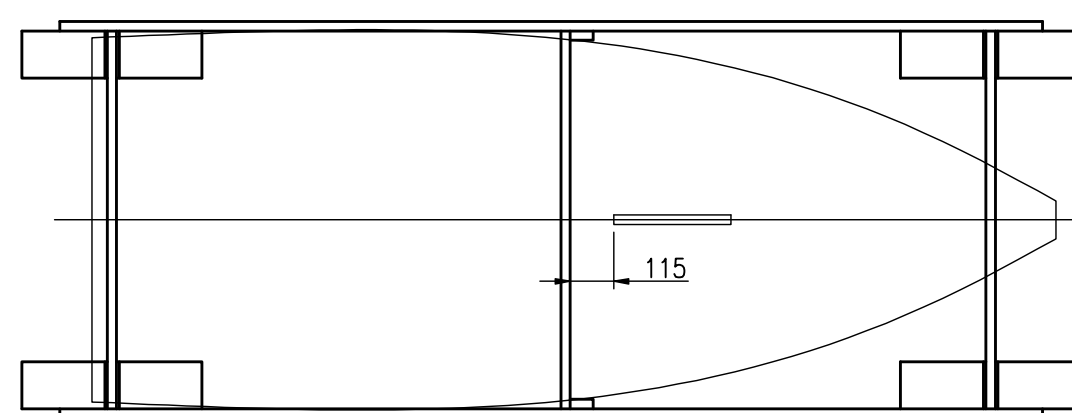


## BUILDING STOCK

SCREWED OF LUMBER OR 22 mm PARTICLEBOARD RESAWN INTO 125 mm AND 175 mm WIDE PANELS

BOTTOM SET UP ON THE BUILDING STOCK AND POSITIONED TO THE AFT END OF THE DAGGERBOARD CASE SLOT, THEN TEMPORARILY FASTENED WITH TWO SCREWS TO THE STOCK AMIDSHIP BEAM

AFT AND FORWARD KEELSON MADE OF ONE PIECE OF TIMBER NARROWED TO 25 mm IN THE DAGGERBOARD CASE PLACE, PART ALONG THE CASE SLOT WRAPPED WITH AN ADHESIVE TAPE TO PREVENT GLUING, THEN THIS PART REMOVED WHILE PREPARING THE HULL TO PAINT



2.6m

HULL CONSTRUCTION  
SHEET 26.2/4, SIZE A2  
SCALE 1:10, 1:20

RADOSŁAW WERSZKO  
JUNE 2015