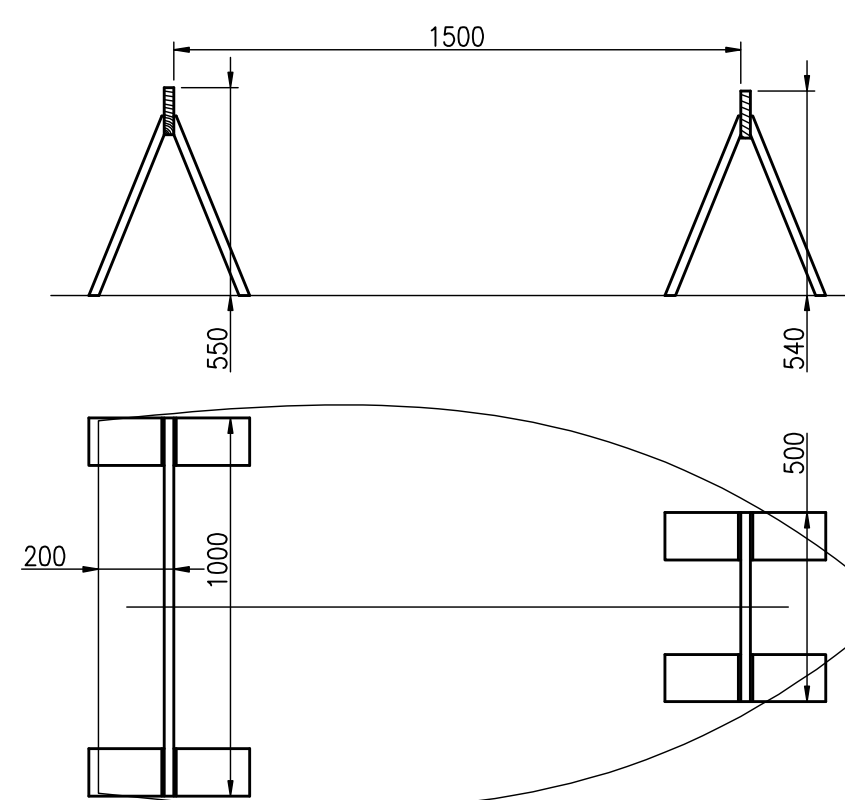
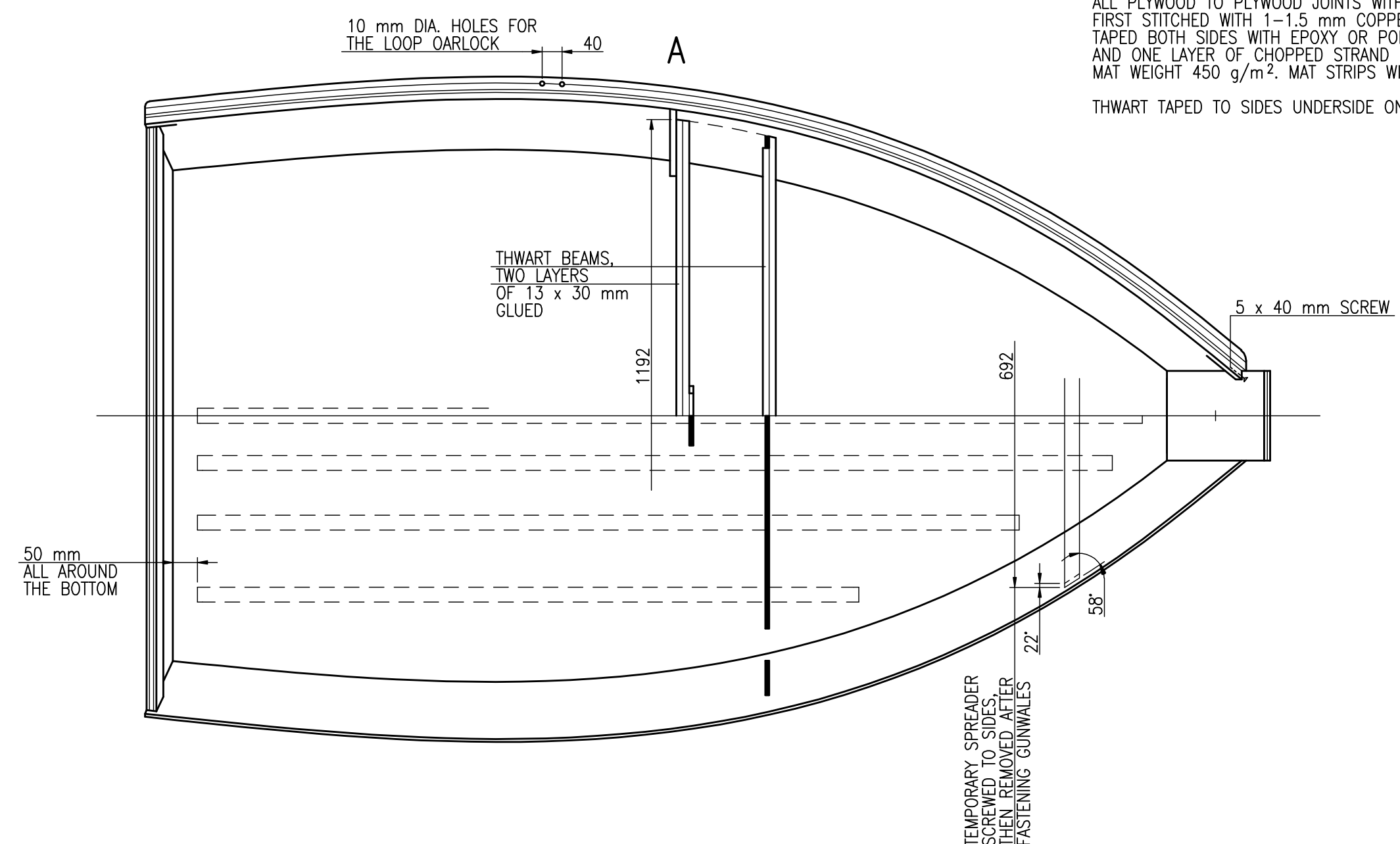


ALL OTHER PLYWOOD TO TIMBER JOINTS GLUED  
AND NAILED WITH 1.2 x 20 mm NAILS SPACED 50 mm

ALL NAILS OF BRASS. ALL SCREWS OF BRASS  
OR STAINLESS STEEL

ALL PLYWOOD TO PLYWOOD JOINTS WITHOUT TIMBER  
FIRST STITCHED WITH 1-1.5 mm COPPER WIRE, THEN  
TAPED BOTH SIDES WITH EPOXY OR POLYESTER RESIN,  
AND ONE LAYER OF CHOPPED STRAND MAT EACH SIDE.  
MAT WEIGHT 450 g/m<sup>2</sup>, MAT STRIPS WIDTH 100 mm

THWART TAPED TO SIDES UNDERSIDE ONLY



**BUILDING STOCK**  
SCREWED OF LUMBER OR 22 mm PARTICLEBOARD  
RESAWN INTO 125 mm WIDE PANELS

BOTTOM SET UP ON THE BUILDING STOCK  
AND POSITIONED TO THE AFT EDGE, THEN  
TEMPORARILY FASTENED WITH TWO SCREWS  
TO EACH TRESTLE BEAM

## MAIN DIMENSIONS

LENGTH OVERALL	L <sub>OA</sub>	2.20 m
LENGTH OF WATERLINE	L <sub>WL</sub>	2.00 m
BEAM	B	1.30 m
BEAM OF WATERLINE	B <sub>WL</sub>	1.13 m
DRAFT	T <sub>C</sub>	0.10 m
FREEBOARD AFT	F <sub>A</sub>	0.325 m
FREEBOARD FORWARD	F <sub>F</sub>	0.40 m
VOLUME DISPLACEMENT	V	0.15 m <sup>3</sup>

# 2.2m

**HULL CONSTRUCTION**  
SHEET 22.2/2, SIZE A2  
SCALE 1:10, 1:20

RADOSŁAW WERSZKO  
JANUARY 2016, AUGUST 2020, JULY 2021